

Monthly Summary of Events Report
Events Branch
6-13-20 to 7-17-20

DATE	EVENT	LOCATION	ATTENDANCE	# OF USHERS	VEHICLES PARKED	# OF PARKING ATTENDANTS	OTHER EVENT(S) HELD ON SAME DATE/TIME	COMMENTS
7/8/20	Office of Elections	Stadium Parking Lot	42	-	-	1		Voter registration drive-thru event to assist the public in registering to vote from the convenience of their vehicles.
7/9/20	Office of Elections	Stadium Parking Lot	106	-	-	1		Election officials were on site to assist the public in registering to vote from the convenience of their vehicles.

NOTE: All other events have been canceled from 3/21/20 until further notice due to COVID-19.

DAVID Y. IGE
GOVERNOR

CURT T. OTAGURO
COMPTROLLER



An Agency of the State of Hawaii

ROSS I. YAMASAKI
CHAIRMAN, STADIUM AUTHORITY

SCOTT L. CHAN
MANAGER

RYAN G. ANDREWS
DEPUTY MANAGER

July Stadium Board Meeting Marketing Update

Marketing and communication efforts will continue to ensure the Aloha Stadium is properly up-to-date on activities and new guidelines during this COVID-19 time. In addition, we continue to focus on the following items:

1. Communications/Marketing/Advertising Coordination

- Stadium event related media coordination as needed.
- Communication coordination with all Hawaii media platforms as they arise.
- Assist clients/sponsors with marketing and communication needs as needed upon request.
- Outline Marketing Communications Plan for the upcoming season

2. Update and maintain website

- Continue to maintain and update the website with current events and information on a daily base.
- Continue to update site improvement issues online.

3. Social media and ongoing public relations efforts

- Continue to monitor and update daily.

4. UH Football Coordination

- Review and collaborate with UH Marketing Department / IMG on 2020 season activities and events.
- Ongoing meetings to continue prior to season.

5. IMG Advertising Coordination

- Assist with contract renews as needed.
- Oversee, as needed, with potential new sponsorships, events and activities.
- Collaborate new sponsorship programs and opportunities.

6. Swap Meet & Marketplace Coordination

- Continue to review and update swap meet marketing and operations needs as requested with Centerplate and Krysti Peacock/Moxie Agency.
- Assist with marketing/PR efforts and coordination.

7. Miscellaneous

- COVID-19 signage and messaging coordination.
- Assist with PR campaigns and advertising for new stadium (NASED) as needed.
- Microsoft Teams & Zoom coordination
- Private event program - relaunch procedures, objectives and collateral updates
- Stadium Stars program – continue to work on off season recruitment and finalize 2020 season guidelines.

8. Upgrade facility/event collateral

- Intergrade new facility collateral for Administration and Marketing.
- Update HR guidelines and informational hand-outs.

MONTHLY SECURITY REPORT TO THE BOARD

The following is a brief summary of security related incidents which occurred from June 1, 2020, through June 30, 2020.

Modified Swap Meet, Re-Opened on June 13th

One Sick Cared For (SCF) case during Swap Meet. Unknown collapsed while walking around the Swap Meet. Ambulance was called & Emergency Medical Technicians (EMTs) evaluated the individual, then transported him to the Emergency Room. When Aloha Stadium Security and G4S Security arrived, the unknown male was being treated by the EMTs, then placed in the ambulance for transport.

Criminal Property Damage

One of the Stadium Security golf carts was damaged. The ignition was damaged beyond repair and was replaced. The golf cart had no other new damage, besides the ignition.

Miscellaneous Public

G4S Security Officers noticed an unknown male walking around the Parking Lot, near a vehicle that had been left overnight from the Swap Meet. The vehicle could not start and the owner was planning to return the next day to fix or tow the vehicle. When questioned by G4S Security Officers, the unknown male did not have any Identification and did not answer the questions from G4S Security. Honolulu Police Department (HPD) was called and two HPD Officers responded. The unknown male continued to be evasive when questioned by HPD. The HPD Officers escorted the unknown male off the Stadium property. S

Conclusion

Prepared and submitted by,



Neal O. Sakamoto, Stadium Security Officer
07-20-2020, 1445hrs

Engineering Branch Report For
Stadium Authority Board Meeting
July 17, 2020

1. Maintenance & Facility Items
 - a. Plexiglass protective workplace barriers being installed in specific offices for added protection to COVID-19.
 - b. Facility being prepared for modified/limited capacity opening under COVID-19 restrictions. Preparations for Aloha Stadium include:
 - i. Dividers being installed in-between urinals and sinks in restrooms.
 - ii. Signage and queue line markers are being placed throughout facility.
 - iii. Plexi-glass and hardware are being installed at employee/guest interaction points to provide additional protection related to COVID-19 transmission (security points, turnstile gates, concessions, etc.).
 - iv. Seat straps have been procured to close seats not being used.
 - v. Cleaning and disinfecting protocols being updated.
 - c. Rust mitigation along seat plates to cover holes and “soft spots” using metal plating continues.
 - d. Drain covers being repaired/replaced in many seating areas.
2. HART station in Kamehameha Lot
 - a. Construction continues with the station by NAN Inc.
 - b. A parking lot walk-through is scheduled for July 30, 2020. Stadium will be supported by a DAGS Public Works Inspector.
 - c. Goal is to return Kamehameha Lot to stadium for regular use/operations before the 2020 football season.
3. WJE Structural Assessment
 - a. On-site assessment complete. Awaiting draft report.
 - b. Report will establish the priority for health and safety repairs.
 - c. Following the review and acceptance of the report, the next step will be to commence design work for prioritized projects.



Monthly Report
 Stadium Authority Meeting
 7/30/2020

ALOHA STADIUM SWAP MEET AND MARKETPLACE
 June 2020

Shopper Attendance:

June Monthly Attendance		Days Open	Daily Average	Coupons	Paid Attendance	Average Daily Paid Attendance
2019	117,679	14	8,406	169	117,510	8,394
2020	20,069	6	3,345	20069	-	-
Difference	(97,610)	-8	(5,061)	19900	(117,510)	(8,394)
%	-83%		-60%	11775%	-100%	-100%

Vendor Attendance:

June Total Stall Count		Days Open	D,E, & F Total Stall Count	Daily Average Count	A,B,C Total Stall Count	Daily Average Count
2019	9,749	14	5,111	365	4,638	331
2020	2,568	6	-	-	2,568	428
Difference	(7,181)	-8	(5,111)	(365)	(2,070)	97
%	-74%		-100%	-100%	-45%	29%

Operations Information:

Honolulu Rail Transit Project Update

July 2020

Aloha Stadium Authority



As of 6/16/20



Status of Activities

Kamehameha Highway Stations Group

94% Complete

Substantial Completion projected for September 2020

Waiawa (Pearl Highlands) Station – 95% Complete



Major Work Remaining

- Erosions Controls, wire mesh
- Fabric installation
- Signage
- Sidewalks, landscaping

Canopy Status

- Arms - Complete
- Fabric - July 2020

Energization Status

- Station - February 2020

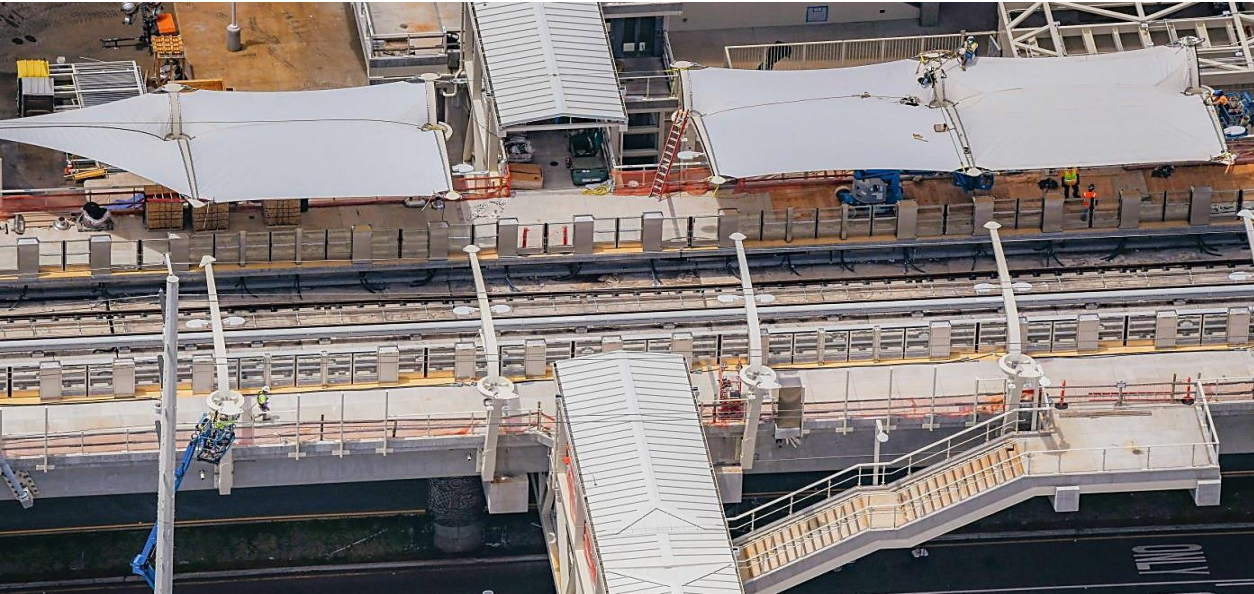
Core Systems Interface

- HRHJV in TCCR & UPS
- BoS Date - Available for COMM
- Conduit (GW to TCCR) - Complete
- Platform Partial Access - PSGs complete

Kamehameha Highway Stations Group

94% Complete

Substantial Completion projected for September '20
Kalauao (Pearlridge) Station – 95% Complete



Major Work Remaining

- Elevator glazing
- Wire mesh
- Signage
- Tile entrance

Canopy Status

- Arms - Complete
- Fabric installation - Complete

Energization Status

- Station - January 2020

Core Systems Interface

- HRHJV in TCCR & UPS
- BoS Date - Available for COMM
- Conduit (GW to TCCR) - Complete
- Platform Screen Gate System - PSGS - Complete

Kamehameha Highway Stations Group

94% Complete

Substantial Completion projected for September '20
Halawa (Aloha Stadium) Station – 93% Complete



Major Work Remaining

- Wire mesh
- Visual screens
- Signage
- Elevators
- Canopy Arms & Fabric

Canopy Status

- Arms installation - July 2020
- Fabric installation - September 2020

Energization Status

- Station - October 2019

Core Systems Interface

- HRHJV in TCCR & UPS
- BoS Date - Available for COMM
- Conduit (GW to TCCR) - Complete
- Platform Partial Access - Available for PSGS

Traffic



Airport Guideway and Stations

Maintenance of Traffic Update



Kamehameha Highway

- **Day and night:** Daily intermittent single lane closures in both directions effected between Center Drive and Halawa to support guideway final set, sound wall work and traffic signal trenching.

Pearl Harbor Interchange

- **Night:** East bound H-1/Nimitz Hwy/JBPHH ramp closures and traffic detours effected to support segment deliveries and gantry 1 operations.

Nimitz Highway and Vicinity

- **Day/Night:** single lane closures on H-1 and Nimitz Hwy to Aolele Street effected to support segment deliveries and gantry 2 operations.
- **Night:** Closures on Valkenburgh Street Zone 4 and Ualena Street, Zone 8 effected for utility relocations.

Airport Areas

- **Day/Night:** Alternating lane closures and 24-hour lane shifts from Aolele to Paiea Streets effected for airport utility work, shaft drilling, column erection, and ongoing station construction.
- **Night:** H-1 to Aolele Street off ramp closed. Lei stand detour configuration effected for column work. Flagging operations on Aolele Street, east of Paiea Street to Lagoon Drive, effected for road widening, utility work and shaft drilling.

Keehi Interchange

- **Day and Night:** Intermittent single lane closures on Nimitz Hwy and Kamehameha Hwy/Dillingham Boulevard effected to support trestle operations and MSTC station work.



Project Wide Construction Update

West Oahu Stations Group

97% Complete

Substantial Completion: January '20
Kualaka'i (East Kapolei) Station – 98% Complete



Major Work

- Site utilities
- Grading & landscaping
- Signage

Canopy Status

- Arms & Fabric - Complete

Energization Status

- Station Infrastructure - Complete

Core Systems Interface

- HRHJV working: COMM, PSG, FDAS, SCADA
- BoS Date - July 12, 2019
- TCCR Access - February 18, 2019
- Platform Partial Access - July 9, 2019

West Oahu Stations Group

98% Complete

Substantial Completion: January '20

Keone'ae (UH-West O'ahu) Station – 98% Complete



Major Work

- Site utilities, grading & landscaping
- Traffic Signals
- Signage

Canopy Arms & Fabric - Complete

Energization - February 2020

Core Systems Interface

- HRHJV working: COMM, PSG, FDAS, SCADA
- BoS Date - March 2019
- TCCR Access - February 2019
- Platform Partial Access - June 2019
- Conduit (GW to TCCR) - May 2019

West Oahu Stations Group

97% Complete

Substantial Completion: January '20
Honouliuli (Ho'opili) Station – 98% Complete



Major Work

- Faregate & Civil Site work
- Signage
- Landscaping

Canopy Status

- Arms & Fabric - Complete

Energization Status

- Station - March 2019
- TPSS - February 2020

Core Systems Interface

- HRHJV working: COMM, PSG, FDAS, SCADA
- BoS Date - March 2019
- TCCR Access - February 2019
- Platform Partial Access - April 2019
- Conduit (GW to TCCR) - Complete

Farrington Highway Stations Group

97% Complete

Substantial Completion projected for September '20
Pouhala (Waipahu Transit Center) Station – 97% Complete



Major Work Remaining

- Moloalo Street Entrance
- Faregate Canopy Steel and Fabric
- Signage

Canopy Status

- Arms & Fabric - Complete

Energization Status

- Station and TPSS – February 14, 2019

Core Systems Interface

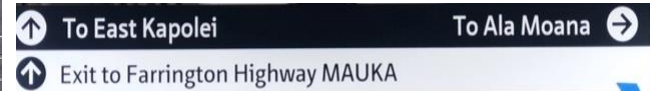
- BoS Date – May 19, 2019 (FDAS)
- TCCR Access provided
- Platform Partial Access – March 2019

Farrington Highway Stations Group

98% Complete

Substantial Completion TBD

Hālaulani (Leeward Community College) Station – 99% Complete



Major Work

- Canopy Fabric Detailing
- Punch List

Canopy Status

- Arms & Fabric - Complete

Energization Status

- Station
 - Infrastructure - Complete
- GBS - July 31, 2019

Core Systems Interface

- BoS Date - May 2019
- TCCR Access provided
- Platform Partial Access - March 2019



Core Systems 68% Complete

Projected Completion
4th Quarter 2025



Installation

Keone'ae

- Completed FDAS installation
- SCADA installation ongoing
- Communication installation ongoing

Pouhala Station

- FDAS installation complete
- Communication installation ongoing

Hālaulani Station

- SCADA installation ongoing

Waiawa

- Communication installation ongoing

Kalauao

- PSG electrical installation ongoing

Hālawā

- PSG mechanical installation ongoing

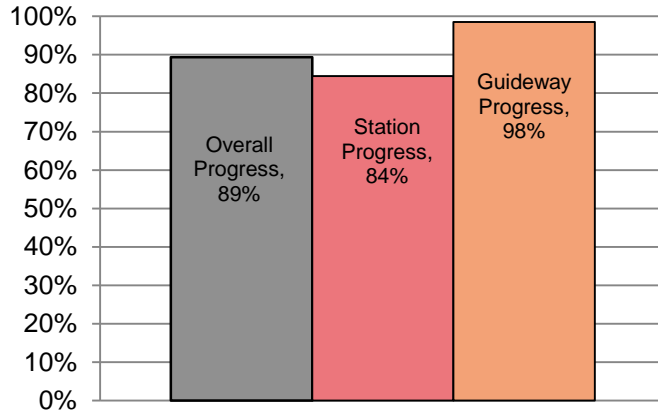
Guideway

- MDS fiber termination at poles 20 -29 continues

Passenger Vehicle

Train #7	Arrived on-site
Train #8	(I/O#1) routine ATC acceptance test ongoing
Train #9	(I/O#1) routine COMM acceptance test ongoing
Train #10	(I/O#1) ready for integration testing
Train #11	(I/O#1) ready for integration testing
Train #12	(I/O#1) ready for integration testing
Train #13	(I/O#1) achieved interim certification
Train #14	(I/O#1) achieved interim certification

SEGMENT 1 - OVERALL INSTALLATION PROGRESS



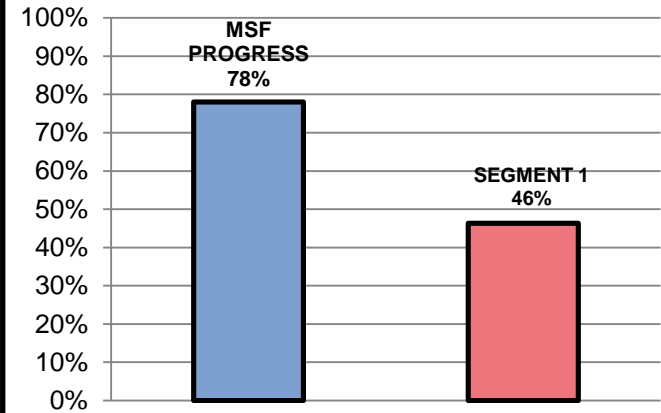
Core Systems

Interim Opening Progress

Installation
89.38%

Testing and Commissioning
46%

TESTING AND COMMISSIONING PROGRESS



Testing and Commissioning

- PSG testing at Waiawa ongoing
- Testing of MDS poles 1-19 ongoing
- Communication acceptance test at Honouliuli ongoing
- Performed platform gap measurements for ADA compliance at the first 8 stations at AWO
- ATC Wayside Test Procedure (WTP) testing between PHL and ALH continues
- MSF Communication acceptance testing ongoing

Upcoming Activities

- PSG commissioning and testing at PHL and PRS - Complete
- Remaining ATC wayside testing in Segment 1 - Complete
- Achieve Train #14 Interim Certificate for dynamic testing
- BLS installation continues
- SCADA installation and testing continues
- Communication installation and testing continues

Airport Guideway and Stations

70% Installed Progress through May 29, 2020



Guideway

Completed to Date

- 190/225 shafts completed (84%)
- 178/232 columns completed (77%)
- Span Erections: 126/210 spans completed (60%)
- Precast Yard Activities: 2668/2708 segments completed (98%)
- HECO Zone 4 existing overhead lines over H-1 at Valkenburgh Street have been relocated underground and energized. HECO Zones 1, 2, 3, 5, & 7 completed and energized.

Major Work

- Reach C: Street light, HDOT-A comm, water, fuel, gas, and drainage relocations on Aolele Street near the Paiea Street intersection. Ongoing coordination for remaining fuel line removal.
- Reach D: HECO Zone 8 infrastructure, and HTI and OTWC comm. relocations on Ualena Street and Waiwai Loop.
- Reach A: Traffic Signal conduit and median restoration work has ongoing.

Airport Guideway and Stations

Makalapa (Pearl Harbor Naval Base Station)

11% Complete

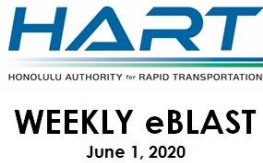
Major Work

- Design - Complete
- Hammerhead Guideway Piers installed
- Platform Girder top-down construction ongoing
- Electrical infrastructure for SS #25 ongoing
- Makai Landing Pier - Complete



Stay Connected

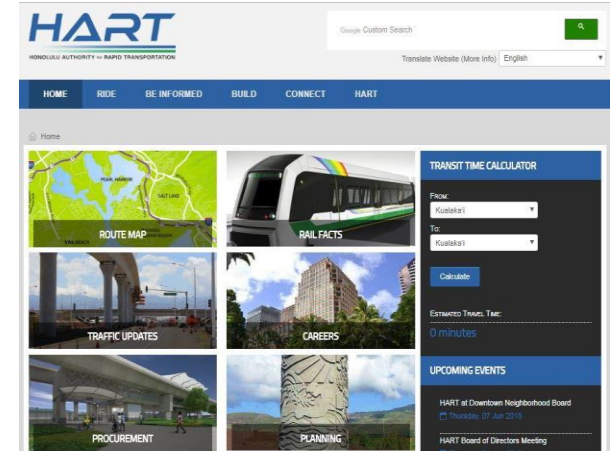
- Weekly Traffic Advisories
- Weekly e-Blast
- Website and Social Media



TRAIN #14 ARRIVES AT HART RAIL OPERATIONS CENTER



The first of the four cars of HART's 14th passenger train rolled into the Rail Operations Center last Wednesday morning under a police escort. The 60-foot long vehicle was shipped to Honolulu from California, where Hitachi Rail has its final assembly plant.



HART Rapid Response

- 24-Hour Project Hotline number 808-566-2299
- Email inquiries info@HonoluluTransit.org
- Social Media inquiries

Mahalo!

New Aloha Stadium Entertainment District Committee (NASED)

July 17, 2020

Board Members: Brennon Morioka (Chair), John Fink, Keith Amemiya

Stadium Staff: Ryan Andrews, Stephen Lee

Purpose: Update Authority on various activities concerning NASED.

1. Governance

- SB2940, relating to the Stadium Development District, to provide development powers to the Stadium Authority and to transfer development responsibility from the HCDA to the Stadium Authority was deferred on 7/10/20.
- Options are being considered to continue to move the project forward with minimal delay. Options include: 1) working through HCDA, which will require a memorandum of agreement to formalize roles and responsibilities of HCDA, DAGS and Stadium Authority, or 2) Resubmit a new bill in the next legislative session to seek the establishment of developmental powers to the Stadium Authority.

2. Financial

- Meetings between the Financial Advisor and the Stadium Authority, DAGS, and Office of Budget & Finance continue to take place related to procurement/financial close requirements and processes.
- Advisors have developed financial models to be used during the RFP phase to measure proposals to determine best value for money for the State. The financial model was recently updated to account for a range of operational costs such as stadium operations, facilities management and lifecycle costs.

3. Schedule

Programmatic Environmental Impact Statement (PEIS)

- A draft PEIS is expected to be published by early fall. This will commence a 45-day review period.
- This is a slight delay compared to earlier time lines but should not affect the schedule of the Request for Proposals.

Request for Qualifications (RFQ)

- RFQ response deadline was May 26, 2020. Six (6) submittals were received.
- The evaluation process is underway by the RFQ/RFP committee and the advisory teams.
- The goal of this process is to identify +/- three (3) priority respondents who will progress to the RFP (Request for Proposal) phase. The RFQ evaluation is on schedule to conclude by the end of July 2020.

Master Planning

- Consultant team continues to develop the Masterplan / Stadium and District program. The current focus is on translating the design principles of the master plan and stadium concept into technical requirements that will form part of the RFP. Subject matter workgroups have been established to facilitate this process.

4. Communication and Public Engagement

Website – Continues to be updated. www.nased.hawaii.gov

Neighborhood Board and Community Association Meetings

- Aliamanu-Salt Lake Neighborhood 18: Attended by NASED team members on 7/9/20
- Aiea Neighborhood Board 20 continues to be in recess due to the potential spread of COVID-19.
- Aiea Community Association will be attended by NASED team members on 7/20/20.