

West Oahu Stations Group

86% Complete

Substantial Completion projected for December '19
 Honouliuli (Ho'opili) Station – 87% Complete



Core Systems Interface

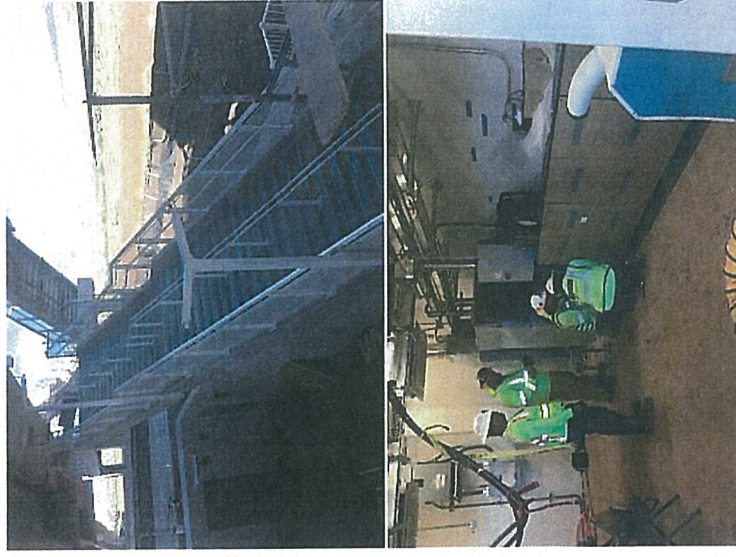
- HRHJV pulling fiber & ATC cable in the TCCR area
- BoS Date – March 4, 2019
- TCCR Access – February 19, 2019

Major Work Remaining

- One (1) Canopy to be installed
- Comm & power conduits
- Faregate & civil site work
- Balustrades & fencing

Energization Status

- Station
 - Energized - March 7, 2019
- TPSS
 - Energized - February 20, 2019

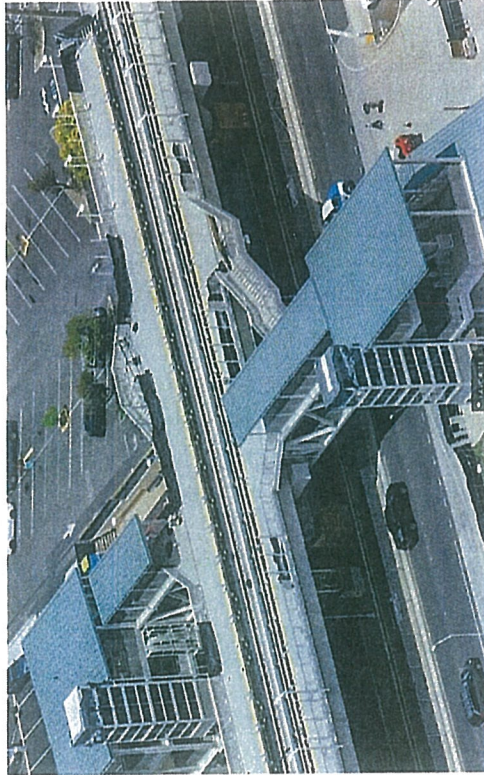


- Platform Partial Access – April 9, 2019
- Canopy Installation (7 of 8) – May 13, 2019
- Conduit (GW to TCCR) – Complete

Farrington Highway Stations Group

90% Complete

Substantial Completion projected for September '19
Hō'ae'ae (West Loch) Station – 93% Complete



Major Work Remaining

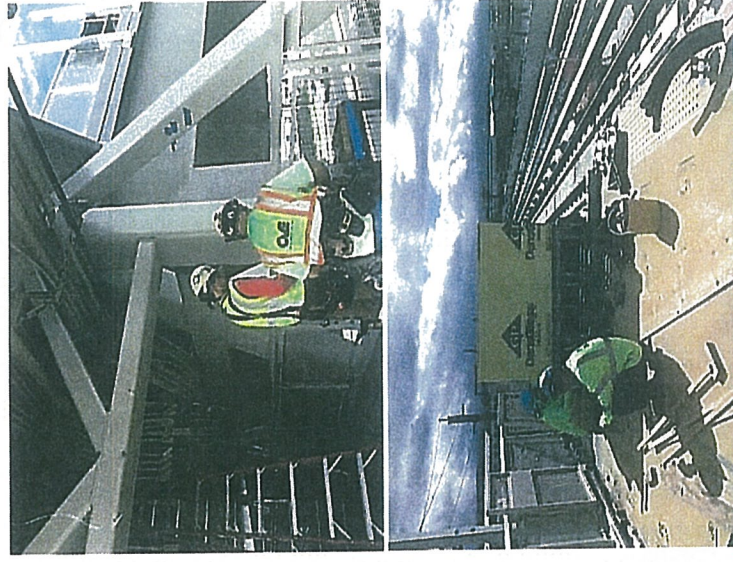
- Entrance Architectural Slabs
- Canopies
- TCCR HVAC Turnover

Energization Status

- Station and TPSS – Complete

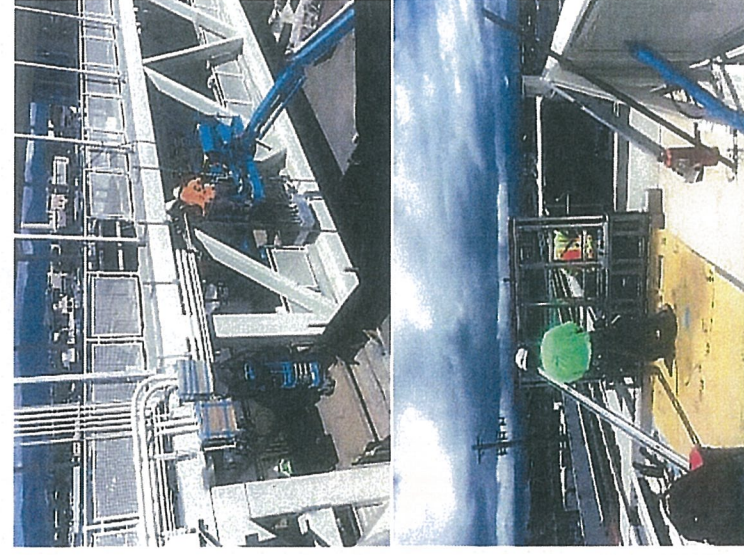
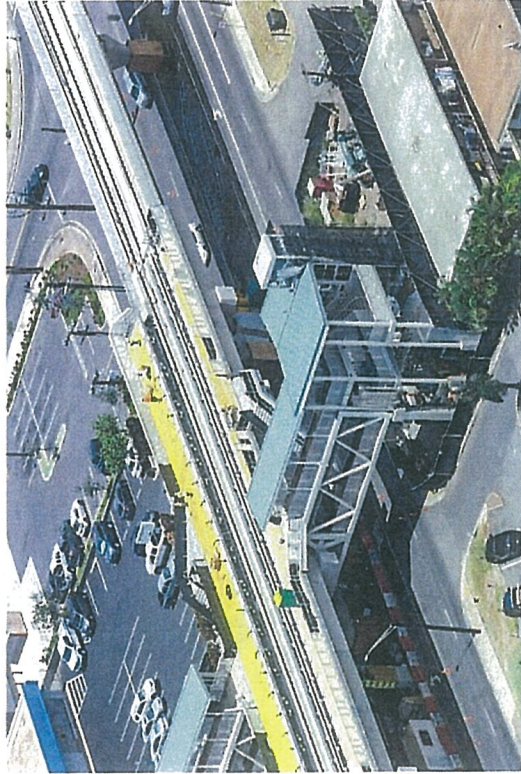
Core Systems Interface

- BoS Date – March 19, 2019
- TCCR access has been provided
- Platform Partial Access – March 17, 2019
- Canopy installation – August 2019



Farrington Highway Stations Group 90% Complete

Substantial Completion projected for September '19
Pouhala (Waipahu Transit Center) Station – 90% Complete



Major Work Remaining

- Moloalo Street entrance
- Makai ground floor slabs
- Canopies

Energyization Status

- Station and TPSS – Complete

Core Systems Interface

- BoS Date – May 19, 2019 (FDAS)
- TCCR access provided
- Platform Partial Access – March 2019
- Canopy Installation – June 2019

Farrington Highway Stations Group

90% Complete

Substantial Completion projected for September '19
Hālaulani (Leeward Community College) Station – 86% Complete



Core Systems Interface

- HRJV is currently working in the UPS room
- BoS Date – May 2019
- TCCR access provided
- Platform Partial Access – March 2019
- Canopy Installation – September 2019

Major Work Remaining

- Platform topping slab
- Parking lot repairs
- Canopies
- PSG Anchor Bolt installation

Energization Status

- Station and TPSS – infrastructure and easement



University of Hawaii Park and Ride - Road "B"

70% Complete (85% Planned)

Substantial Completion projected for September '19



WOSG Group interface

- Main power connection & tie into the UHWO Station
- Traffic signals

Major Work Remaining

- HECO to pull permanent power cables for Road B and UHWO Station
- Sidewalks for Road B and TP&R
- Bus Shelters for TP&R
- Traffic signals for Road B
- Irrigation and Landscaping
- Final Lift of AC paving for the parking lot TP&R
- Electrical Testing and Acceptance of Light Poles and Control Cabinets





Core Systems 62% Complete

Projected Completion
4th Quarter 2025



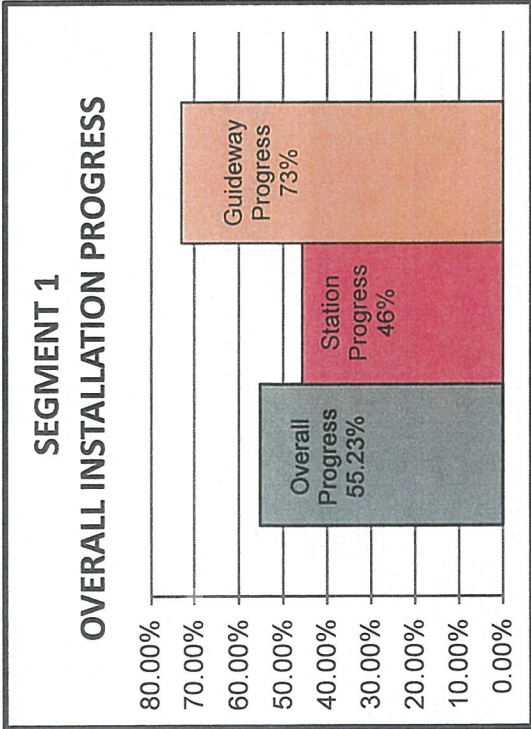
MSF Yard

- Installation and remedial work for communication devices continue in yard and buildings
- VTP testing continues with train #2 in the yard. Two shifts are scheduled to complete VTP testing

Passenger Vehicle

- Train #1: internal dynamic testing ongoing at AW3
- Train #2: Onboard ATC vehicle testing ongoing
- Train #3: TPPT09 completed
- Train #4: Leveling performed with open items
- Train #5: TDVT01 ongoing
- Train #6 Gangway installation to be scheduled.

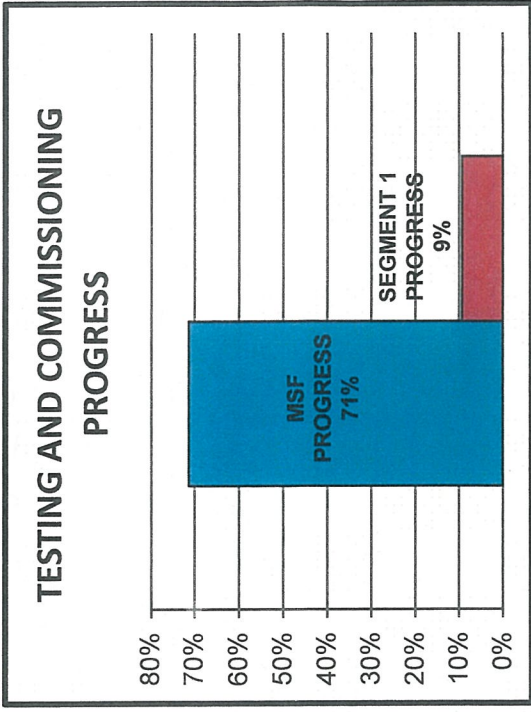
Core Systems



Interim Opening Progress

Installation
55%

Testing and Commissioning
9%



Installation

Ho'opili Station

- FOCN cable pulling completed in the TCCR.
- FDAS installation to begin mid-June 2019.

Leeward Community College Station

- UPS has been delivered and installed.
- Temporary generator power to be connected for preliminary testing.

Pearlridge Station

- ATC rack to rack wiring completed.

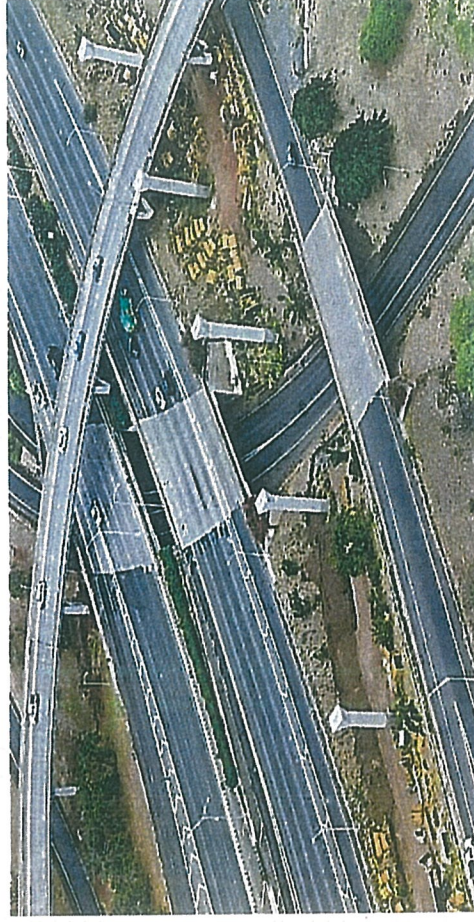
Aloha Stadium Station

- TCCR cable tray installation is ongoing.

Testing and Commissioning

- Megger and continuity test of PSG cables complete at HOP station.
- ATC WTP testing at the Waipahu station TCCR is ongoing.

Airport Guideway and Stations 48% Complete (48% Planned)

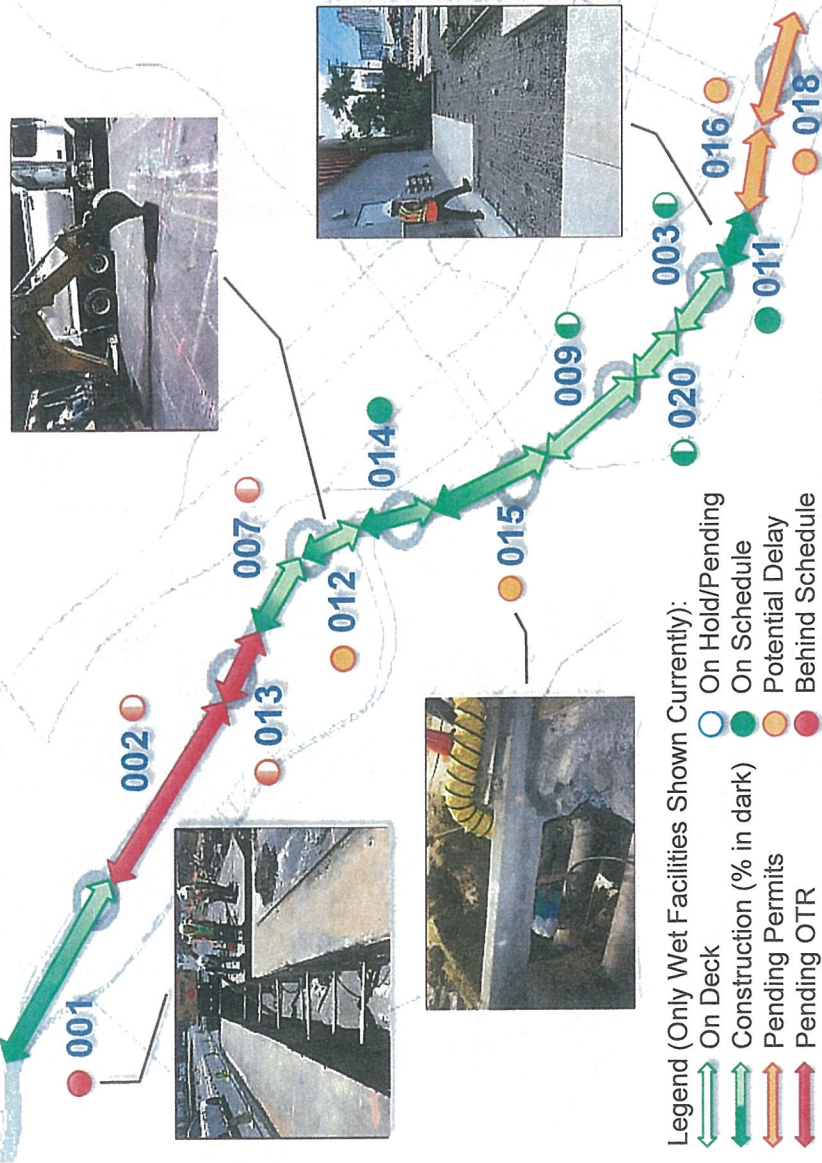


Completed To Date: Design progression at 99% (Earned value at 95.8% due to design resubmittals). 147 drilled shaft foundations completed, 115 columns installed, and 42 spans have been erected. 1,693 pre-cast segments have been cast. The 30-inch storm drain line installation on Radford Drive is complete.

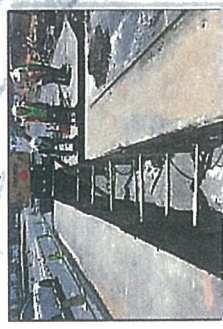
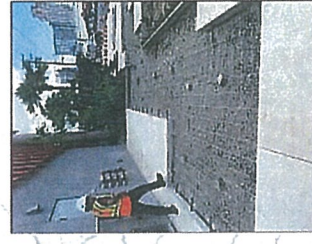
Ongoing Construction: Drilled shaft excavation/Rebar installation/formwork for shafts and columns, anti-graffiti coating application for Columns (6.1 Columns complete), Gantry operations for span erection to continue in Reach A; the erection of the second gantry for Reach C is ongoing (anticipated commissioning mid-May). The HECO Zone 3 infrastructure is underway at Kam Hwy/Center Drive, and the HECO Zone 4 infrastructure at Valkenburgh Street is anticipated to begin late-May. Hammerhead falsework/operations continue at the Pearl Harbor Station.

City Center Utilities Relocation

Status as of June 4, 2019



- Installed Work Progress (*Estimate*):
 - **23.9% vs. 22.5% last update** (Earned + Eliminations / Scope)
- Estimated Completion: **February 2022**
- Highlights on Active Task Orders:
 - **001** – Relocating 24" water facility; will be complete by middle of June
 - **011** – Completed wet facility relocations
 - **012** – Starting relocation of 12" sewer facility; continuing jet grouting operations
 - **015** – Removing 5 fuel lines
 - **016/018** – Awaiting trenching permits
- Highlights on Design Finalization Issues:
 - **Dillingham Wet/Dry Design** – design being revised; alternatives are being vetted that will eliminate relocation requirements on east end.
 - **Halekauwila Wet/Dry** – design being revised; assessing impacts of pier changes.
- Highlights on Elimination Activities:
 - Received **4 HECO variances** on Nimitz allowing the **elimination of approximately \$7.5M** in project scope.
- Will revise visual indicators next month to include all utility relocation requirements (wet, dry, roadway, etc.)



Stay Connected

- Weekly Traffic Advisories
- Weekly e-Blast
- Website and Social Media



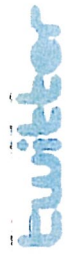
HART
HONOLULU AUTHORITY • RAPID TRANSPORTATION

HART WEEKLY eNEWS
March 2, 2018

HART & ANSALDO HONOLULU JV REACH MAJOR MILESTONE IN RAIL PROJECT



HART & Ansaldo Honolulu Joint Venture reached a critical milestone this week in the completion of the Honolulu Rail Transit Project and the start-up of operations.



HART Rapid Response:

- 24-Hour Project Hotline number
808-566-2299
- Email Inquiries:
info@HonoluluTransit.org
- Social Media Inquiries

Mahalo!

HIC-TOD Report
For
Stadium Authority Board Meeting
27 June 2019

1. PIG meeting Held 23 May 2019 (H-S Portion: 8:30-10:30) at HISAM
 - a. Regroup Kick-off
 - b. Review of Preferred Alternatives
 - c. Presentation of Infrastructure Considerations
 - i. Hard Infrastructures: Utilities such as water, sewer, etc. (i.e. Horiz. Structures)
 - ii. Soft Infrastructures: Schools (i.e. Vertical Structures)
 - d. Infrastructure Implementation
 - i. Add'l sewer capacity needed as Ancillary development progresses
 - ii. HECO may need substation to accommodate all development
 - iii. Add'l Elementary school needed per DOE
 - e. Financing Preview
 - f. Next Steps

2. Next HIC-TOD Meeting: 18 June 2019
 - a. Status Update: CIP Projects Funded
 - b. Status Update: TOD Implementation
 - c. Proposed Neighbor Islands PIG Meeting to follow