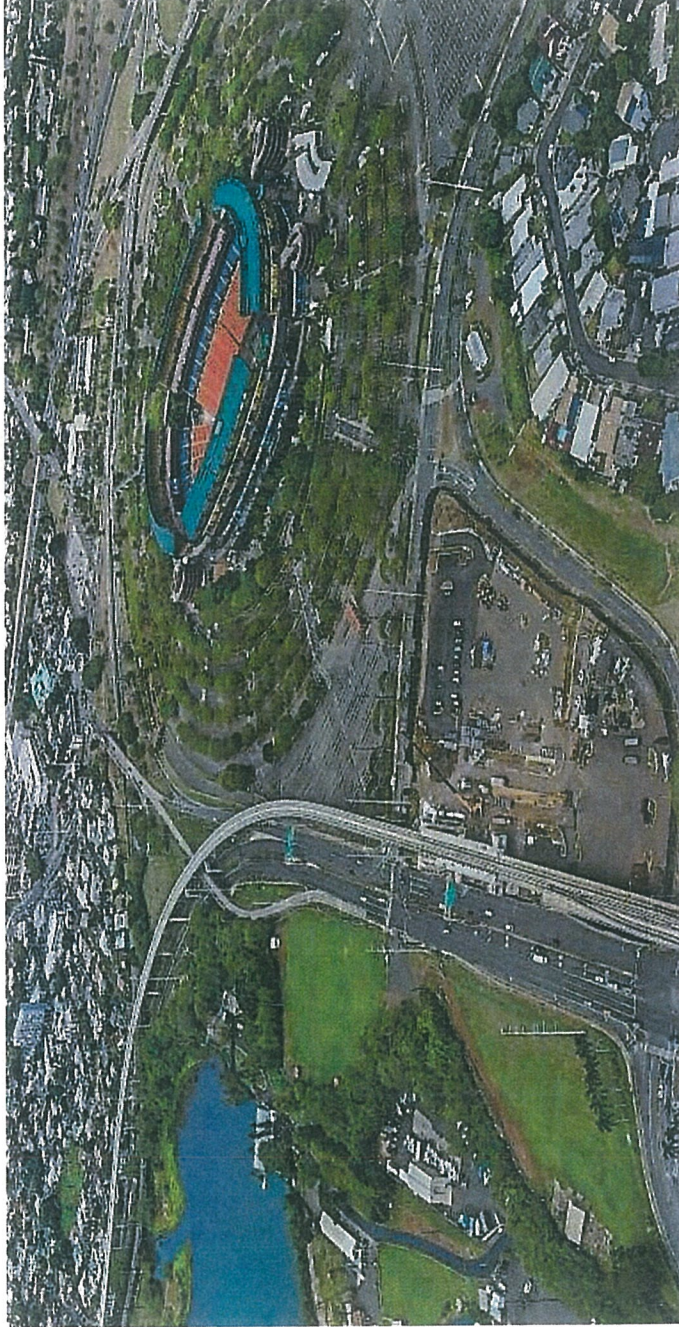


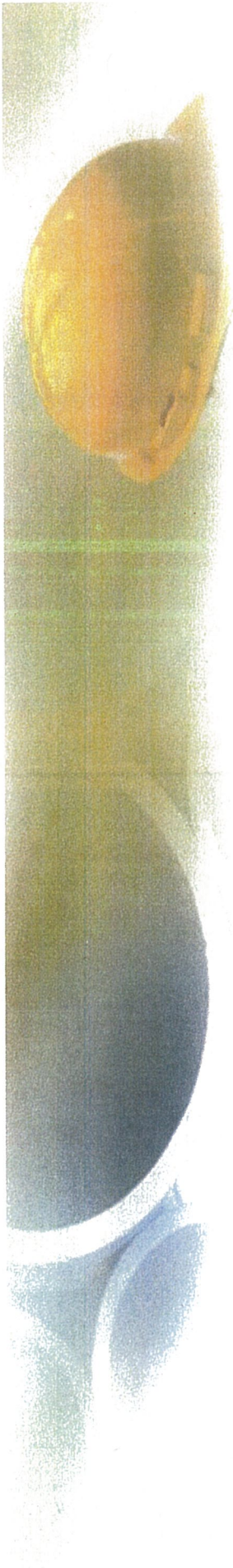
Honolulu Rail Transit Project Update

June 27, 2019

Aloha Stadium Authority



Aerial as of 05.14.19

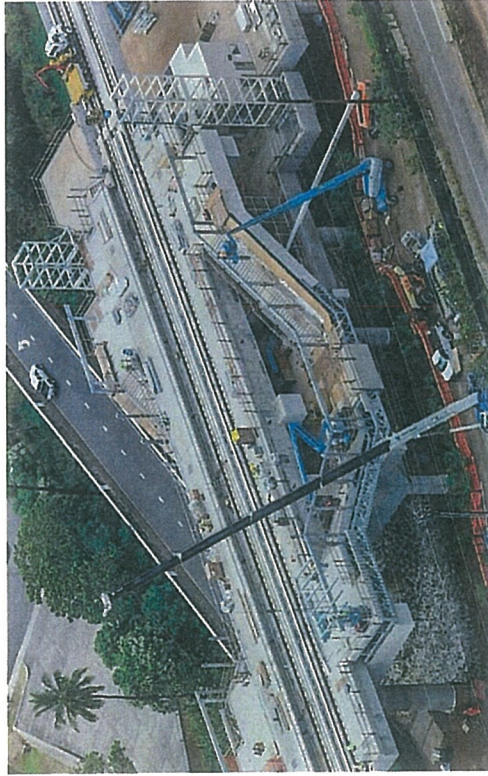


Status of Activities

Kamehameha Highway Stations Group

70% Complete

Substantial Completion projected for December '19
Waiawa (Pearl Highlands) Station – 77% Complete



Core Systems Interface

- HRHJV installing cable tray in TCCR
- BoS Date – May 1, 2019
- Conduit (GW to TCCR) – Complete



Major Work Remaining

- North entrance ramp & stairs
- Site slope & rock protection
- Elevators
- Canopies

Energization Status

- Station - August 2019

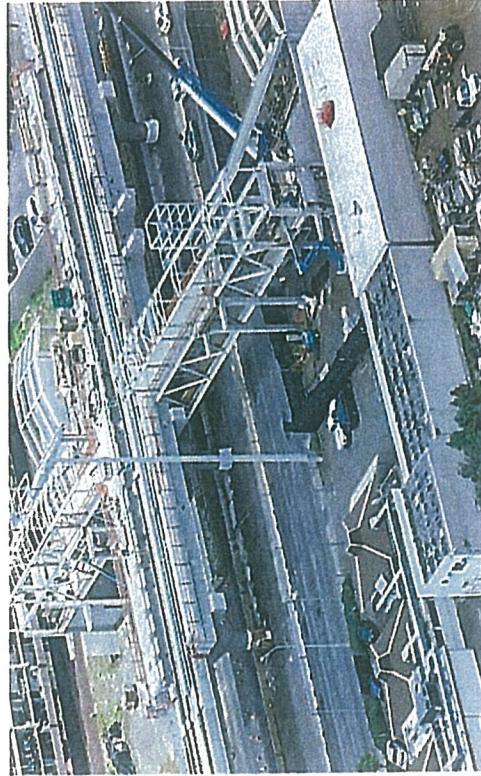


- Platform Partial Access – July 31, 2019
- Canopy Installation – Anticipated by September 2019

Kamehameha Highway Stations Group

70% Complete

Substantial Completion projected for December '19
Kalauao (Pearlridge) Station – 71% Complete



Major Work Remaining

- Platform topping & PSG plates
- Stairs to platform
- Faregate modules
- Elevators
- Canopies

Energization Status

- Station – August 2019

Core Systems Interface

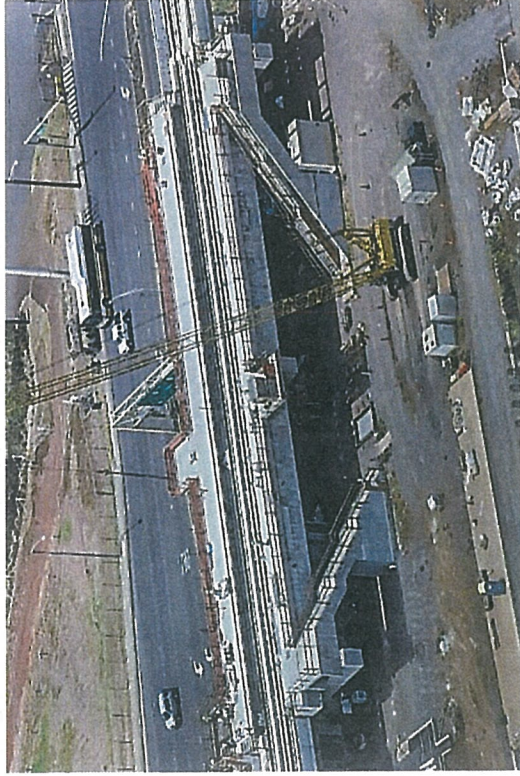
- HRHJV installing cable tray in TCCR
- BoS Date – June 1, 2019
- Conduit (GW to TCCR) – Complete

- Platform Partial Access – June 1, 2019
- Canopy Installation – October 2019



Kamehameha Highway Stations Group 70% Complete

Substantial Completion projected for December '19
Halawa (Aloha Stadium) Station – 53% Complete



Core Systems Interface

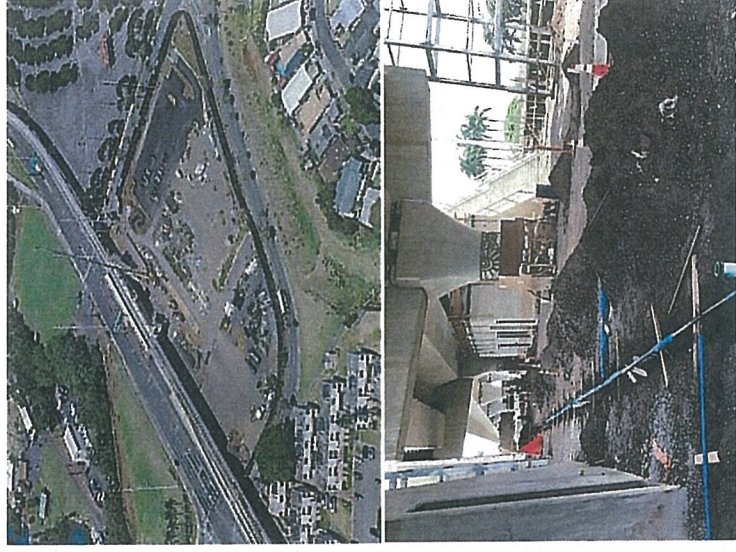
- HRHJV working in TCCR
- BoS Date – July 2019
- Conduit (GW to TCCR) – Complete

Major Work Remaining

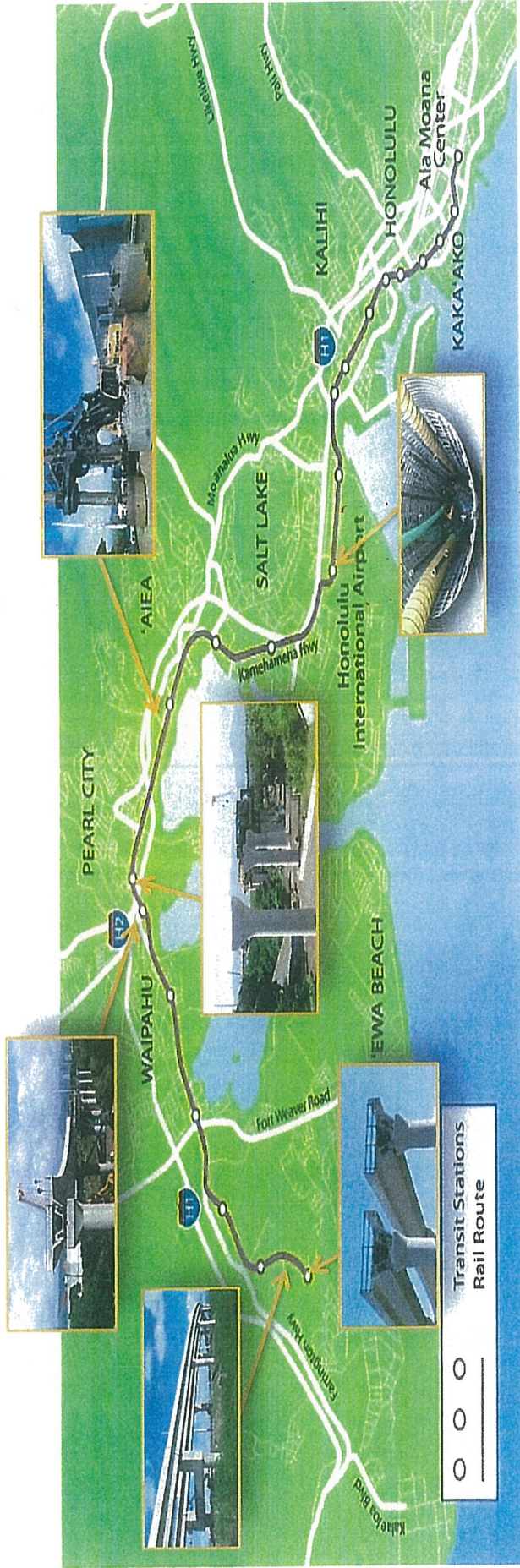
- Platform topping & PSG plates
- Entry plaza slab on grade
- Elevators
- Canopies

Energization Status

- Station
 - Infrastructure – Complete
 - HECO transformer & meter work in progress



Traffic



Airport Guideway and Stations Maintenance of Traffic Update

Kamehameha Highway

- **Day:** Single WB lane closures along Mauka Frontage Road to Center Drive for HECO Zone 3 duct bank trenching. Single EB inside lane closures from Radford Drive to Center Drive to support hammer head operations fronting PHNB Station.
- **Night:** Full closures in both directions (detours using Center Drive) to support hammer head operations fronting PHNB Station.
- **Day/Night:** Single inside lane closures in both directions to support overhead gantry operations between Halawa Drive and Radford Drive; segment deliveries at night.

Radford Drive

- **Daytime only:** Contraflow conditions between Kamehameha Highway and Center Drive for trench work in support of HECO System Site #25 conduit work.

Nimitz Highway and vicinity

- **Day or night:** Intermittent closures of Main Street during second gantry assembly and load testing.
- **Night:** Closures on Wai Wai Loop fronting Lagoon Drive Station site for potholing and utility work.

Airport areas

- **Night:** Detour vicinity of Car Rental return areas for shaft drilling and column erection. Alternating lane closures on Aoole Street, east of the terminal for water line installation.





Project Wide Construction Update

West Oahu Stations Group

86% Complete

Substantial Completion projected for December '19
 Kualaka'i (East Kapolei) Station – 79% Complete



Core Systems Interface

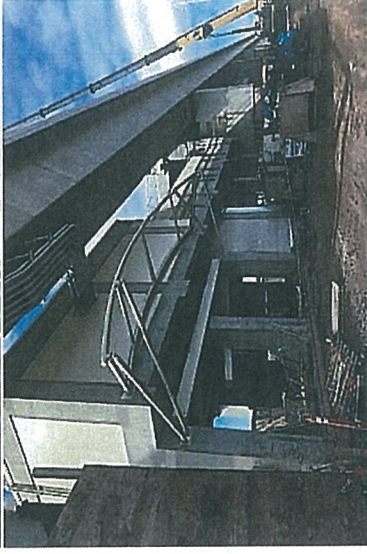
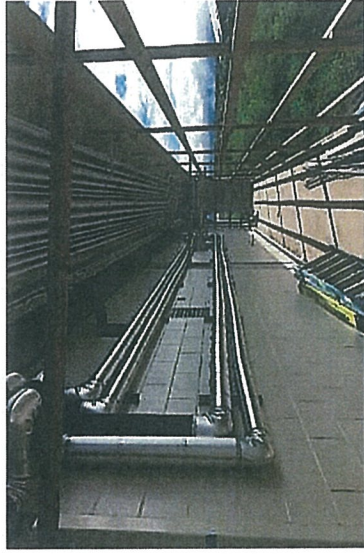
- HRHJV working on the platform
- BoS Date – July 12, 2019
- TCCR Access – February 18, 2019

Major Work Remaining

- Comm & power conduits
- Canopy fabric
- Site utilities and grading
- Balustrades and fencing

Energization Status

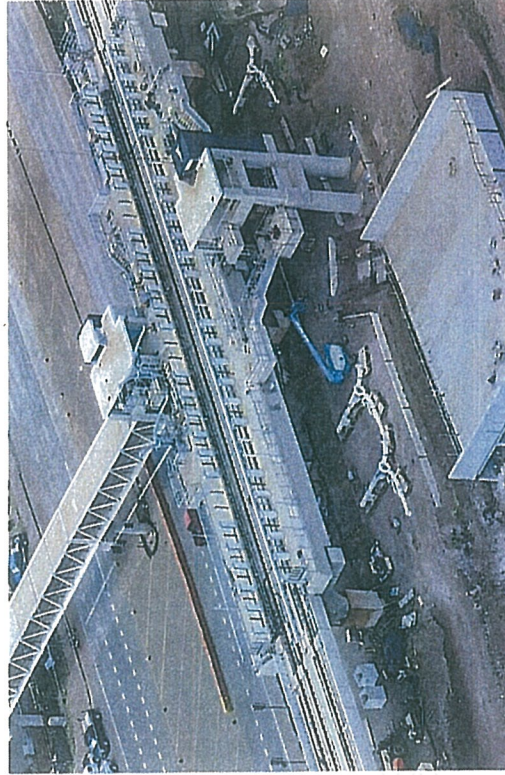
- Station
 - Infrastructure - Complete
 - Energization - July 31, 2019
- Platform Partial Access – July 9, 2019
- Canopy installation – February 8, 2019
- All powers & comm materials received



West Oahu Stations Group

86% Complete

Substantial Completion projected for December '19
Keone'ae (UH-West O'ahu) Station – 90% Complete



Core Systems Interface

- HRHJV working in the TCCR and GW area
- BoS Date – March 18, 2019
- TCCR Access – February 2019

Major Work Remaining

- Conduit Raceways for SCADA
- Platform Canopy Fabric
- Faregates & entrance
- Balustrades & fencing
- Site utilities & grading

Energization Status

- Station
 - Infrastructure - Complete

- Platform Partial Access – June 4, 2019
- Canopy installation – March 29, 2019
- Conduit (GW to TCCR) – May 2, 2019

