

# October 2019

November 2019

October 2019

Su	Mo	Tu	We	Th	Fr	Sa
3	4	5	6	7	8	9
10	11	12	13	14	15	16
17	18	19	20	21	22	23
24	25	26	27	28	29	30

Su	Mo	Tu	We	Th	Fr	Sa
6	7	8	9	10	11	12
13	14	15	16	17	18	19
20	21	22	23	24	25	26
27	28	29	30	31		

SUNDAY	MONDAY	TUESDAY	WEDNESDAY	THURSDAY	FRIDAY	SATURDAY
Sep 29 6:30am Swap Meet (Stadium) 8:00am B4 Sports (Stadium)	30 6:30pm OEOA (HR)	Oct 1 7:30am DHRD (HR)	2 8:00am Swap Meet (Stadium) 9:00am Supervisor Meeting (Conf Rm)	3 8:00am Swap Meet (Stadium)	4 8:00am Pay	5 8:00am Swap Meet (Stadium)
6 6:30am Swap Meet (Stadium) 8:00am B4 Sports (Stadium)	7 6:30pm OEOA (HR)	8	9 8:00am Swap Meet (Stadium)	10 8:00am Swap Meet (Stadium)	11	12 8:00am Swap Meet (Stadium)
13 6:00am SCCA (LHPL) 6:30am Swap Meet (Stadium)	14	15	16 8:00am Swap Meet (Stadium)	17 8:00am Swap Meet (Stadium)	18 8:00am Pay	19 8:00am Swap Meet (Stadium) 5:00pm UH vs Air Force (Stadium)
20 6:30am Swap Meet (Stadium)	21 6:30pm OEOA (HR)	22 8:00am Real Time R&L (LHPL)	23 8:00am Real Time R&L (LHPL) 8:00am Swap Meet (Stadium)	24 8:00am Real Time R&L (LHPL)	25	26 8:00am Swap Meet (Stadium)
27 6:00am SCCA (LHPL) 6:30am Swap Meet (Stadium)	28	29	30 8:00am Swap Meet (Stadium)	31 7:30am DHRD (HR) 8:30am Board Meeting (Admin. Conf. Rm.)	Nov 1	2

**DAVID Y. IGE**  
GOVERNOR

**CURT T. OTAGURO**  
COMPTROLLER



**ROSS I. YAMASAKI**  
CHAIRMAN, STADIUM AUTHORITY

**SCOTT L. CHAN**  
MANAGER

**RYAN G. ANDREWS**  
DEPUTY MANAGER

*An Agency of the State of Hawaii*

## **April Stadium Board Meeting Marketing Update**

Marketing will continue to promote and explore new opportunities for the Aloha Stadium. In addition, we continue to focus on the following items:

### **1. Upgrade facility/event collateral**

- In-house: finalized photos and copy for fact sheets. Under review.

### **2. Update and maintain website**

- Continue to maintain and update the website with current events and information on a weekly base.
- Continue to update ADA compliance and site improvement issues online.

### **3. Promote facility and events through social media and ongoing public relations efforts**

- Continue to promote all activities and events through social media outlets (Instagram, FB, Twitter, YouTube-as needed).
- Continue to work with current clients to assist with their events and possible future events.

### **4. Employment Recruitment**

- Continue to assist HR department with career fairs, advertising and other opportunities as they arise.

### **5. Monster Truck/Motor Cross event coordination**

- Assist with clients marketing needs.
- Finalize communication information.
- Media/PR campaign focusing on traffic and event updates.

### **6. NFL Rams event coordination**

- Assist marketing team with branding transition.
- Assist sponsorship team with advertising transition and signage replacement/install.
- Assist hospitality team with communication information.
- Media/PR campaign focusing on traffic and event updates.


### **7. Miscellaneous**

- Assist with PR campaigns for new stadium as needed.
- Working with local promoters for potential events/concerts.
- Assist clients with marketing needs as needed upon request.
- Continue to promote VIP areas for upcoming events along with the 2019 UH football season.
- Coordinate 2019 events and activities with UH Marketing/IMG.
- Continue to work closely with OutFront Media with new potential clients as well as current sponsors for all upcoming events and activities.
- Continue to meet weekly with Centerplate and Krysti Peacock/Moxie Agency to review and assist as needed for marketing swap meet updates.
- Continue facility upgrades in sports museum and plazas.
- Continue to coordinate stadium tours; public and private.

MONTHLY SECURITY REPORT TO THE BOARD

The following is a brief summary of security related events and/or incidents which occurred from March 1, 2019, through March 31, 2019.

Swap Meets in March 2019

Stadium Nurses reported 3 Medical Assistance Calls. One call was for Injured Cared For (ICF); injured person fell while trying to climb on a truck; suffered lacerations. Injured person was evaluated and treated by Stadium Nurse. Injured person agreed to drive to the Emergency Room on their own, to have the laceration stitched closed. Two calls were Sick Cared For (SCF); one case, the person feeling sick was evaluated & treated by Nurse & Emergency Medical Technicians (EMTs), then refused further treatment and refused transport by ambulance to an Emergency Room. Person was released on their own. About one hour later, the same person felt sick again. Nurse and EMTs returned; patient was transported via ambulance to the Emergency Room. Second case, the person feeling sick was evaluated by Stadium Nurse and EMTs, then was transported via ambulance to Emergency Room. 

Conclusion

Prepared and submitted by,



Neal O. Sakamoto, Stadium Security Officer  
4-15-2019, 1430hrs

Engineering Dept. Report For  
Stadium Authority Board Meeting  
25 Apr 2019

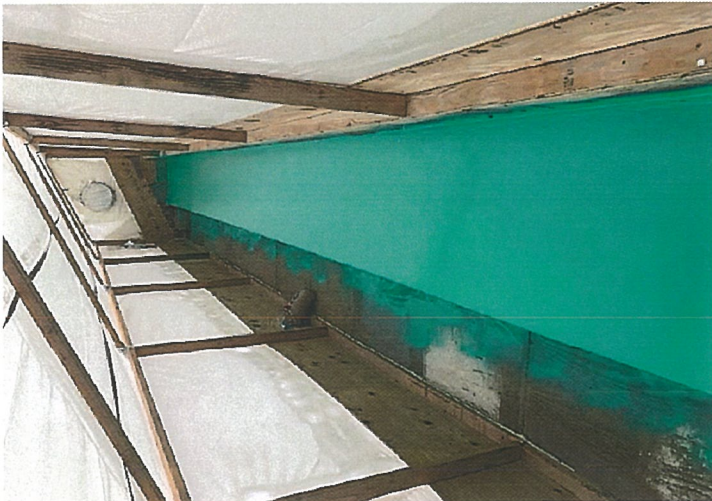
1. **H&S 5 Work**
  - a. Work continues and be completed by end of July 2019. (See Attached Photos)
  - b. Contractor sequencing work around events, such as Monster Truck, Graduations, etc.
2. **Diagonal Brace Investigative Work:** Contractor removed of Concrete to expose beam and brace @ Section D. Next removal will occur at Section S.
3. **H&S 6 work**
  - a. CIP Funding for FY 2020 & 2021 working its way through legislative process
4. **Cellular**
  - a. TM installing permanent antenna. They are aware that they have to coordinate installation with events.
  - b. ATT looking to install more antennae and permanent cellular equipment to allow removal of COW in SW BSA.
5. **Maintenance Items:**
  - a. Various electrical and plumbing repairs continue
  - b. Accelerating parking lot spot repairs
  - c. Repainting yellow siding on upper deck
6. **HART Work in Bus Lot**
  - a. Only work left is topsoil behind new concrete curbs.
7. **HART Station in Kam Lot**
  - a. Construction continues by NAN
8. **Safety**
  - a. Looking to contract for long term oversight by consultant.
9. **New Stadium**
  - a. Site Selection of Halawa Area as best location for new stadium was approved By Board.
  - b. Work continues on MP/EIS.



Inner Lower Concourse replacement Sec. F



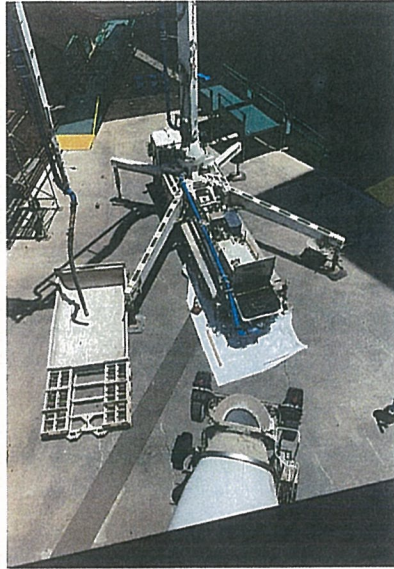
Seat Plate Repairs Orange Section L-Q



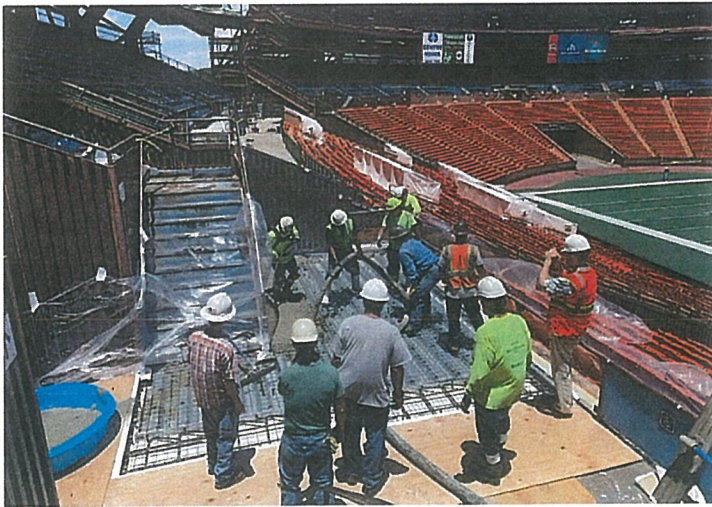
SEat Plate replacement Sec P Orange



Inner Lower Concourse replacement Sec. K



Concrete Pump Truck



Inner concourse replacement Section K (2)



Inner concourse replacement Section K (1)



## Centerplate

Monthly Report  
Stadium Authority Meeting  
4/25/2019

### ALOHA STADIUM SWAP MEET AND MARKETPLACE Mar-19

Shopper Attendance:

March Monthly Attendance		Days Open	Daily Average	Coupons	Paid Attendance	Average Daily Paid Attendance
2018	101,477	13	7,806	52	101,425	7,802
2019	110,032	14	7,859	35	109,997	7,857
Difference	8,555	1	54	-17	8,572	55
%	8%		1%	-33%	8%	1%

Vendor Attendance:

March Total Stall Count		Days Open	D,E, & F Total Stall Count	Daily Average Count	A,B,C Total Stall Count	Daily Average Count
2018	8,707	13	4,541	349	4,166	320
2019	9,750	14	4,869	348	4,881	349
Difference	1,043	1	328	(2)	715	28
%	12%		7%	0%	17%	9%

Operations Information:

# Honolulu Rail Transit Project Update

## April 25, 2019

### Aloha Stadium Authority



Aerial as of 03.15.19

H O N O L U L U R A I L T R A N S I T P R O J E C T

[www.honolulustransit.org](http://www.honolulustransit.org)

**HART**  
HONOLULU AUTHORITY FOR RAPID TRANSPORTATION





# Status of Activities

## Kamehameha Highway Stations Group 63% Complete

Contract Completion: May '19; Anticipated to be December '19  
Waiawa (Pearl Highlands) Station – 71% Complete



### Major Work Remaining

- Platform topping & PSG plates
- North entrance ramp & stairs
- Site slope & rock protection
- Escalator 4 & 6 and elevators
- Canopies

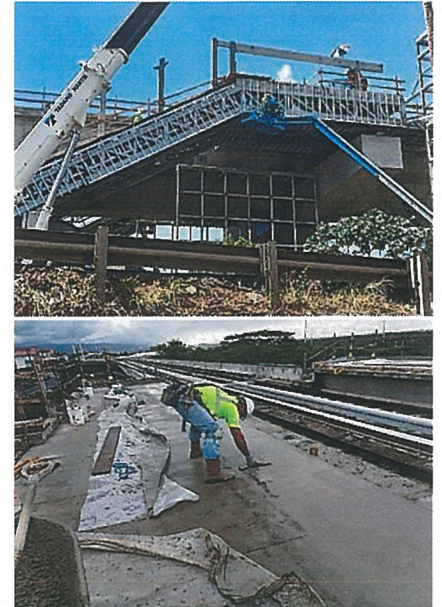
### Energization Status

- Station - June 23, 2019

### Core Systems Interface

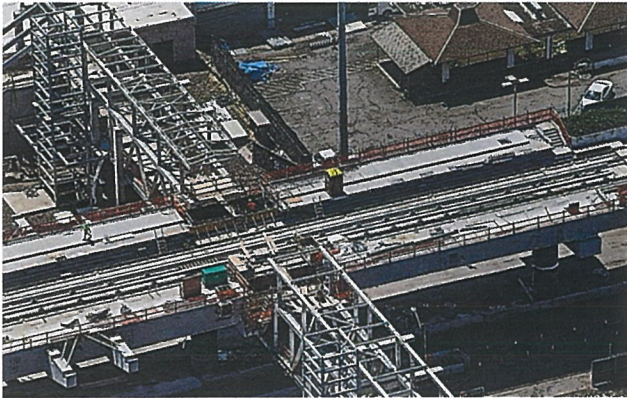
- AHJV installing cable tray in TCCR
- BoS Date - May 1, 2019
- Conduit (GW to TCCR) - Complete

Platform Partial Access - May 1, 2019  
Canopy Installation - Anticipated by  
September 2019



## Kamehameha Highway Stations Group 63% Complete

Contract Completion: May '19; Anticipated to be December '19  
Kalauao (Pearlridge) Station – 64% Complete



### *Major Work Remaining*

- Platform topping & PSG plates
- Pedestrian bridge & stairs to platform
- Escalator #2 & elevators
- Canopies

### *Energization Status*

- Station - June 23, 2019

### *Core Systems Interface*

- AHJV installing cable tray in TCCR
- BoS Date - June 1, 2019
- Conduit (GW to TCCR) - Complete

Platform Partial Access - June 1, 2019  
Canopy Installation - October 2019



## Kamehameha Highway Stations Group 63% Complete

Contract Completion: May '19; Anticipated to be December '19  
Halawa (Aloha Stadium) Station – 45% Complete



### Major Work Remaining

- Platform topping & PSG plates
- Entry plaza slab on grade
- Elevator shaft steel
- Escalator & elevator
- Canopies

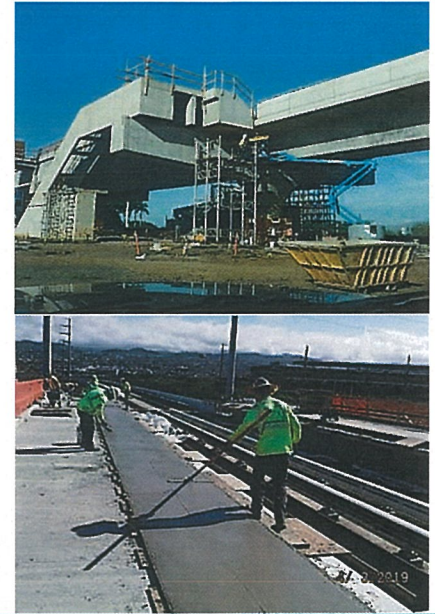
### Energization Status

- Station
  - Infrastructure - Complete
  - HECO transformer & meter work in progress

### Core Systems Interface

- TCCR Access – May 1, 2019
- BoS Date - June 1, 2019
- Conduit (GW to TCCR) - May 1, 2019

Platform Partial Access - July 2019  
Canopy Installation - November 2019



# Traffic



## Airport Guideway and Stations Maintenance of Traffic Update

### Kamehameha Highway

- **Day:** Single lane closures to support column operations. Saturday Kalaloa Boulevard detours to accommodate “final set” operations at installed Spans.
- **Night:** Contraflow conditions during segment delivery and hanging operations. West bound detours to allow for storm sewer line work fronting Pearl Harbor Station site.

### Nimitz Highway / Airport Area

- **Day:** Single lane closures, eastbound Valkenburgh to Aolele Streets to allow for mobilization, utility work, and structure operations.
- **Day/Night:** Nimitz Hwy eastbound entrance onto Main Street will be closed for the second gantry operations.
- **Night:** The left turn from Elliott Street onto Nimitz Hwy westbound and the Nimitz Hwy eastbound entrance to Elliott Street will be closed for structure operations
- **Weekend:** Main Street closed near Nimitz Hwy for second gantry operations.

