

Honolulu Rail Transit Project Update

March 28, 2019

Aloha Stadium Authority



Aerial as of 03.15.19

H O N O L U L U R A I L T R A N S I T P R O J E C T

www.honolulustransit.org

HART
HONOLULU AUTHORITY — RAPID TRANSPORTATION



Status of Activities

Kamehameha Highway Stations Group

63% Complete

Contract Completion: July '18
Waiawa (Pearl Highlands) Station – 68% Complete



Core Systems Interface

- AHJV installing cable tray in TCCR
- BoS Date - May 1, 2019
- Conduit (GW to TCCR) - Complete



Major Work Remaining

- Platform topping & PSG plates
- North entrance ramp & stairs
- Site slope & rock protection
- Escalator 4, 5 & 6 and elevator
- Canopies

Energyization Status

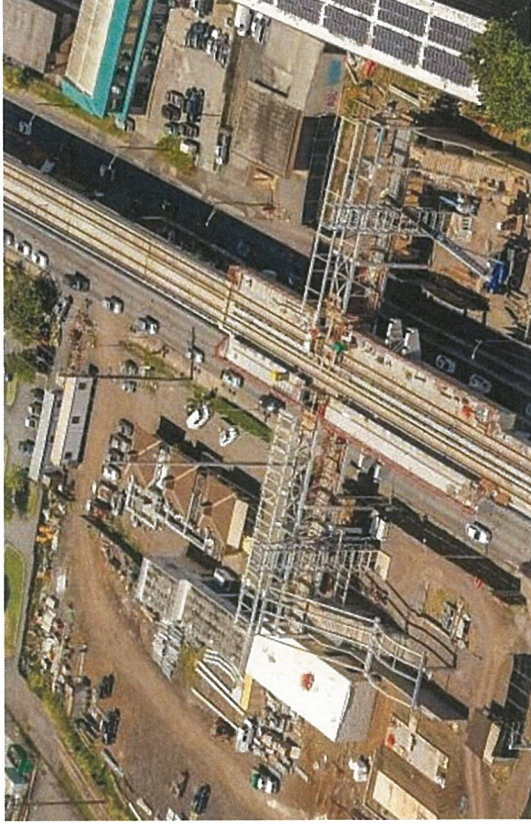
- Station - June 23, 2019

Platform Partial Access - May 1, 2019
Canopy Installation - Anticipated by
September 2019

Kamehameha Highway Stations Group

63% Complete

Contract Completion: July '18
Kalauao (Pearlridge) Station – 64% Complete



Major Work Remaining

- Platform topping & PSG plates
- Pedestrian bridge & stairs to platform
- Escalator & elevator
- Canopies

Energyization Status

- Station - June 23, 2019

Core Systems Interface

- AHJV installing cable tray in TCCR
- BoS Date - June 1, 2019
- Conduit (GW to TCCR) - April 1, 2019

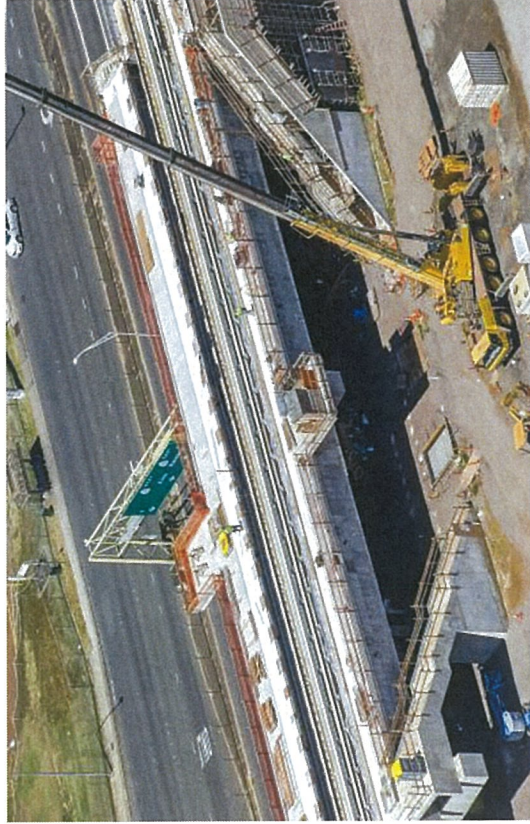
- Platform Partial Access - June 1, 2019
- Canopy Installation - September 2019



Kamehameha Highway Stations Group

63% Complete

Contract Completion: July '18; Anticipated to be October '19
Halawa (Aloha Stadium) Station – 45% Complete



Core Systems Interface

- TCCR Access – May 1, 2019
- BoS Date - June 1, 2019
- Conduit (GW to TCCR) - May 1, 2019



Major Work Remaining

- Platform topping & PSG plates
- Entry plaza slab on grade
- Elevator shaft steel
- Escalator & elevator
- Canopies

Energization Status

- Station – April 26, 2019

- Platform Partial Access - July 2019
- Canopy Installation - November 2019

Traffic



○ ○ ○ ○
 ———
 Transit Stations
 Rail Route

Airport Guideway and Stations

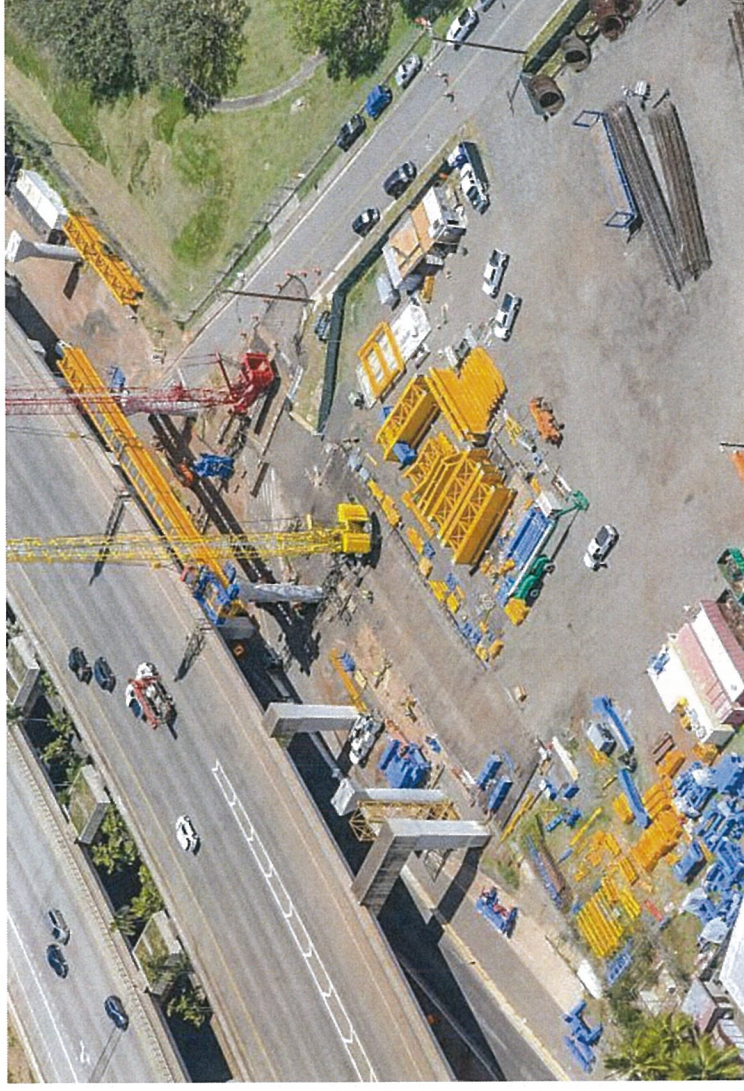
Maintenance of Traffic Update

Kamehameha Highway

- **Day:** Single lane closures to support column operations. Saturday Kalaloa Boulevard detours to accommodate “final set” operations at installed Spans.
- **Night:** Contraflow conditions during segment delivery and hanging operations. West bound detours to allow for storm sewer line work fronting Pearl Harbor Station site.

Nimitz Highway / Airport Area

- **Day:** Single lane closures, eastbound Valkenburgh to Aolele Streets to allow for mobilization, utility work, and structure operations.
- **Day/Night:** Nimitz Hwy eastbound entrance onto Main Street will be closed for the second gantry operations.
- **Night:** The left turn from Elliott Street onto Nimitz Hwy westbound and the Nimitz Hwy eastbound entrance to Elliott Street will be closed for structure operations
- **Weekend:** Main Street closed near Nimitz Hwy for second gantry operations.





Project Wide Construction Update

West Oahu Stations Group

76% Complete

Contract Completion: March '19
Kualaka'i (East Kapolei) Station – 72% Complete



Core Systems Interface

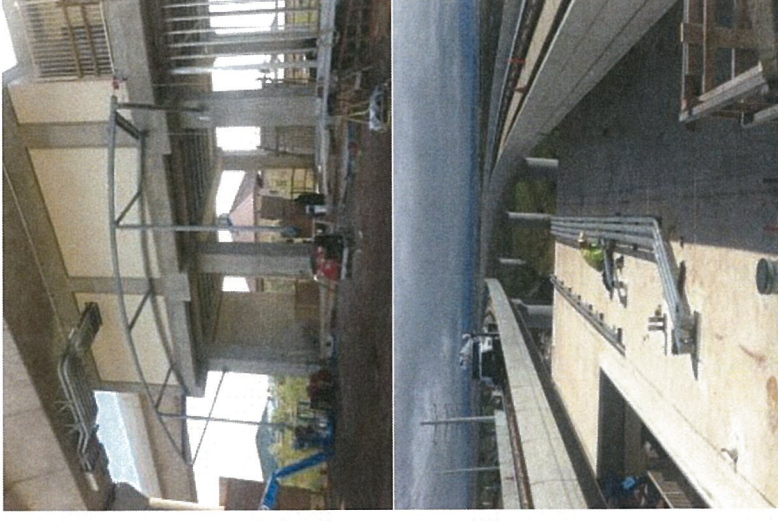
- AHJV working on the platform
- BoS Date – June 13, 2019
- TCCR Access – February 18, 2019

Major Work Remaining

- Comm & power conduits
- Canopy fabric
- Site utilities and grading
- Balustrades and fencing

Energyization Status

- Station – Infrastructure work in progress. (eom March 2019)



- Platform Partial Access – July 9, 2019
- Canopy installation – February 8, 2019
- Material availability impacting delivery dates

West Oahu Stations Group 76% Complete

Contract Completion: March '19
Keone'ae (UH-West O'ahu) Station – 80% Complete



Core Systems Interface

- AHJV working in the TCCR and GW area
- BoS Date – March 18, 2019
- TCCR Access – February 2019



Major Work Remaining

- Comm & power conduits
- Canopies
- Faregates & entrance
- Balustrades & fencing
- Site utilities & grading

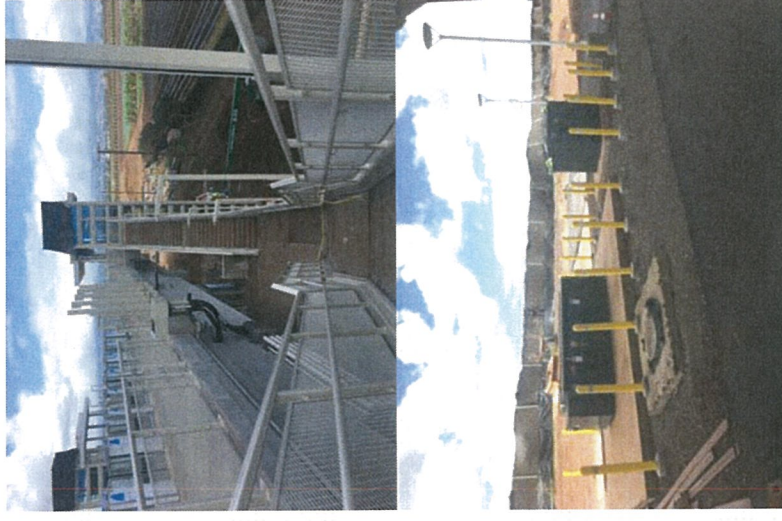
Energization Status

- Station - infrastructure work ongoing (tied to Road B work)

- Platform Partial Access – May 3, 2019
- Canopy installation – April 8, 2019
- Conduit (CW to TCCR) – April 6, 2019

West Oahu Stations Group 76% Complete

Contract Completion: March '19
Honouliuli (Ho'opili) Station – 77% Complete



Major Work Remaining

- Canopies
- Comm & power conduits
- Faregate & civil site work
- Balustrades & fencing

Energization Status

- Station - Energized on March 7, 2019
- TPSS - Energized February 20, 2019

Core Systems Interface

- AHJV working in the TCCR area
- BoS Date – March 4, 2019
- TCCR Access – February 19, 2019

- Platform Partial Access – April 9, 2019
- Canopy Installation – May 13, 2019
- Conduit (CW to TCCR) - Complete