

---

**EXTERNAL AFFAIRS COMMITTEE**

## **External Affairs Committee Report- August 17, 2018**

The Stadium Authority External Affairs committee did not meet in August, but did communicate via email. The committee felt there were no new pressing matters that required a meeting this month, but did discuss the following:

- The wise decision to not allow tickets to be sold at Aloha Stadium for the third Bruno Mars show, thus avoiding any potential problems, undue strain on Stadium personnel, and long lines, which might have led to disgruntled patrons.
- The opportunities for future major concert events at Aloha Stadium.
- The goal/desire to work closely with the approved in-house advertising agency when that decision is finalized in the coming months



# **ALOHA**

## **SPORTS PROPERTIES**

**Stadium Authority Meeting  
August 30, 2018**

### June Update

- Continuing sales cycle for FY19 (2018 Fall Football)
  - FY19 OUTFRONT revenue goal will be 10% increase year-over-year
  - Ongoing conversations with IMG/UH to identify possible ways to work together on behalf of mutually shared corporate partners
  - 2018 Changes
    - Vendor Village in South Plaza in front of Gate 2 vs. tabling by each gate
    - North Plaza activations remain but shifting locations based on Centerplate concessions/beer locations
    - Family friendly activities like Game Truck, Maui and other mascots, etc. to enhance north
    - New signage displays including new 'ALOHA' mural in North Plaza
    - Reduced PA announcements during UH games to address feedback from last season
- FY19 (July 1, 2018 – June 30, 2019) Corporate Partners:
  - Hawaiian Tel Federal Credit Union, Nissan, Heineken, Bank of Hawaii, Anheuser-Busch Sales of Hawaii (Bud Light), Jack in the Box, Gentry Homes, First Hawaiian Bank, Hamada Financial Group, Altres Staffing, UFC Gym, Midas Hawaii, Pest Tech Hawaii, Hawaii Self Storage, Ruby Tuesday Hawaii, Jamba Juice, Toyota Hawaii, Tri-West, Kelly Eisenberg Hotdogs, Southern Turf Hawaii, Noh Foods of Hawaii, Island Insurance, Meadow Gold Dairies, Damien Memorial School, HGEA, Kaiser Permanente, Fujitsu/Admor HVAC, AAU, Sheraton Waikiki/Rumfire, Malibu Rum, GEICO, Hawaiian Electric
- Total FY19 OUTFRONT advertising revenue to-date 97% of FY18 revenue

Louise Sper  
General Manager, Aloha Sports Properties  
louise.sper@outfrontmedia.com  
(o) 808.517.4035 / (m) 310.901.1921



## Centerplate

Monthly Report  
Stadium Authority Meeting  
8/30/2018

### ALOHA STADIUM SWAP MEET AND MARKETPLACE July 2018

Shopper Attendance:

July Monthly Attendance		Days Open	Daily Average	Coupons	Paid Attendance	Average Daily Paid Attendance
2017	121,370	14	8,669	453	120,917	8,637
2018	110,790	13	8,522	112	110,678	8,514
Difference	(10,580)	-1	(147)	-341	(10,239)	(123)
%	-9%		-2%	-75%	-8%	-1%

Vendor Attendance:

July Total Stall Count		Days Open	D,E, & F Total Stall Count	Daily Average Count	A,B,C Total Stall Count	Daily Average Count
2017	10,592	14	5,429	388	5,163	369
2017	9,340	13	4,691	361	4,649	358
Difference	(1,252)	-1	(738)	(27)	(514)	(11)
%	-12%		-14%	-7%	-10%	-3%

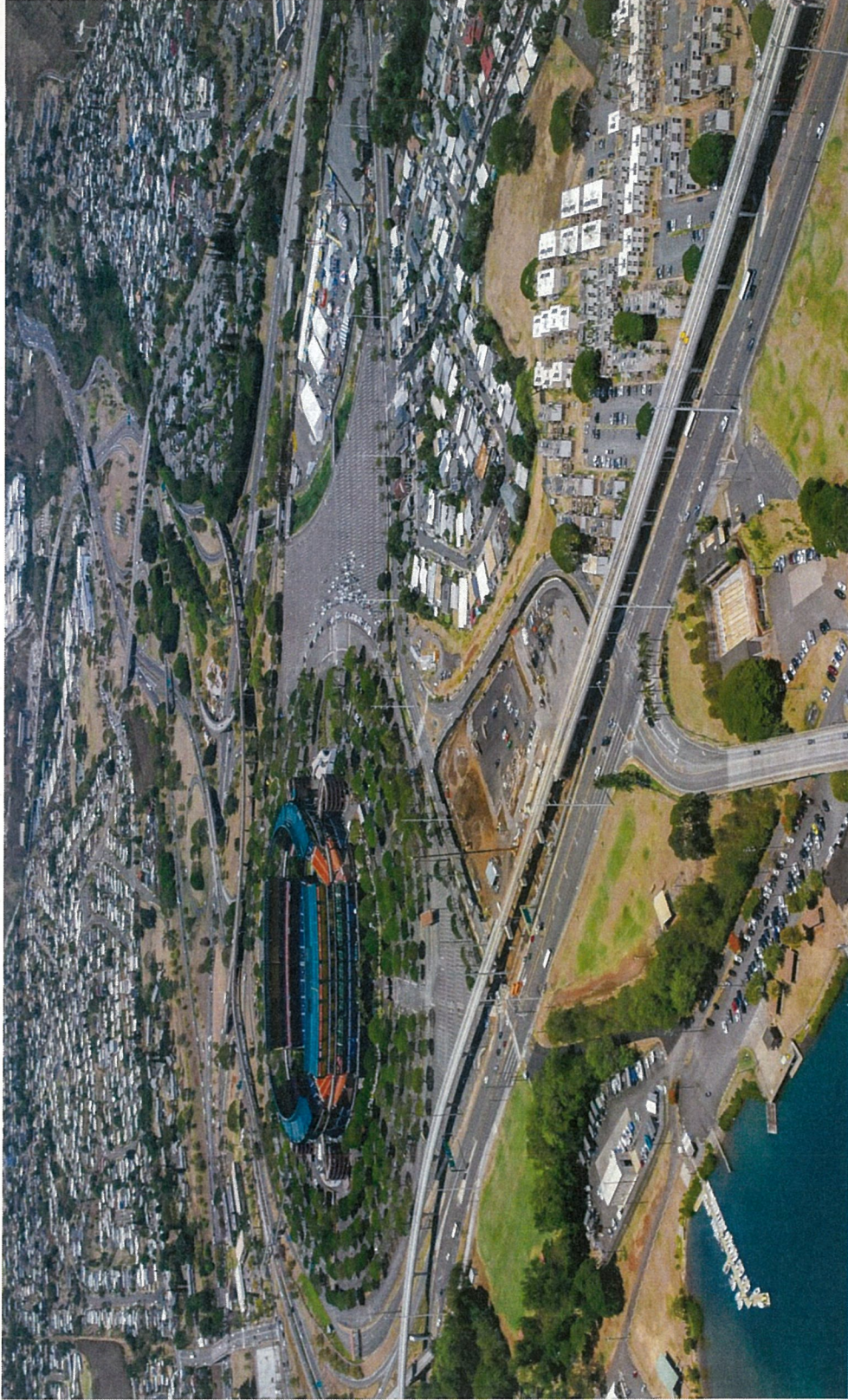
Operations Information:



# Honolulu Rail Transit Project Update

## August 30, 2018

### Aloha Stadium Authority



HONOLULU RAIL TRANSIT PROJECT

[WWW.HONOLULUTRANSIT.ORG](http://WWW.HONOLULUTRANSIT.ORG)

**HART**  
HONOLULU AUTHORITY FOR RAPID TRANSPORTATION





# Status of Activities



# Guideway



## West Oahu-Farrington Highway (Kapolei to Pearl Highlands)

- 99.9% complete.
- Punchlist work continues with 1 item remaining.
- Working with Contractor to finalize all closeout documentation.
- On-going discussions with the Contractor to conclude work and settle commercial matters.

## Kamehameha Highway (Pearl Highlands to Stadium)

- 99.9% complete.
- Punchlist work continues with 2 items remaining.
- Working with Contractor to finalize all closeout documentation.
- On-going discussions with the Contractor to conclude work and settle commercial matters.

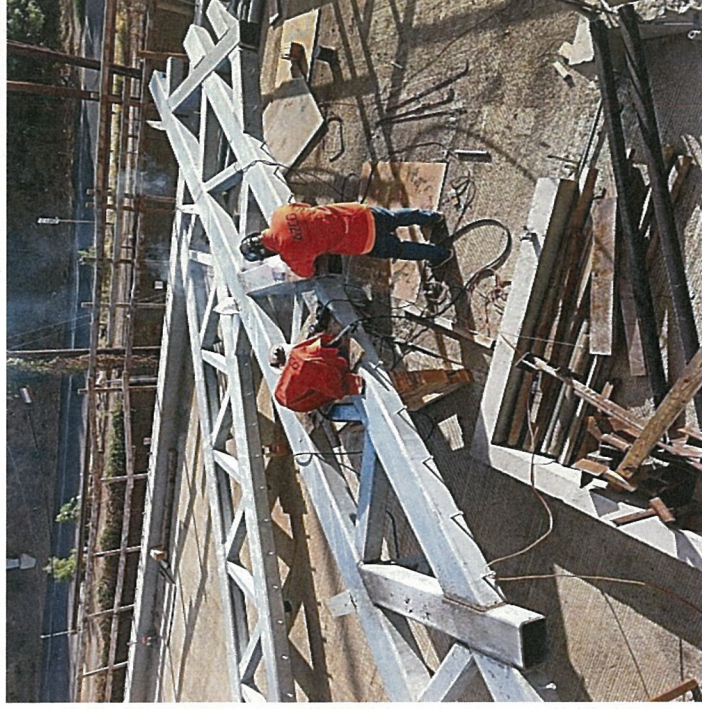
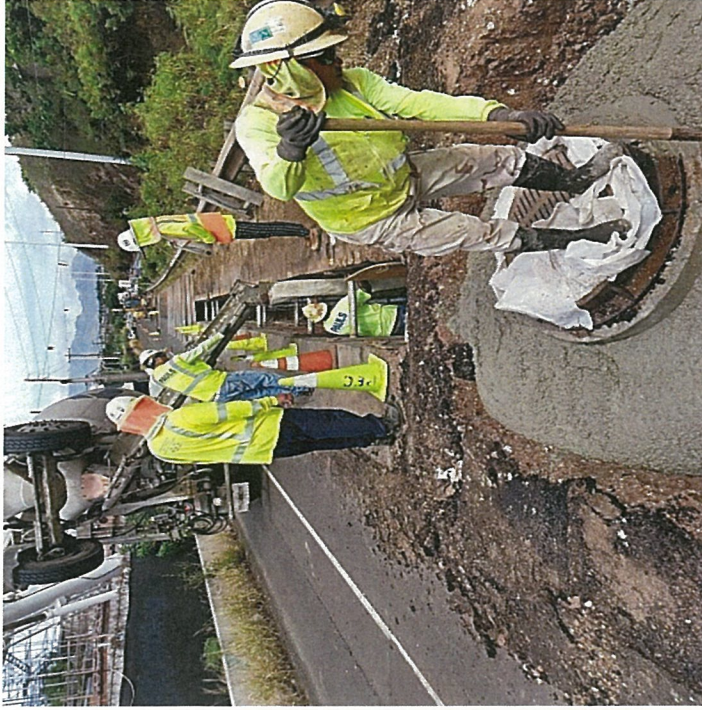


# Kamehameha Highway Stations Group

38.2% Complete

Contract Completion: May '19; Anticipated to be September '19

Waiawa (Pearl Highlands) Station – 49.9% Complete



- Commenced post-tensioning at platform box beam girders.
- Commenced on-site pre-assembly and welding of escalator/stair metal trusses.
- Continuing installation of electrical ductbank and vaults along Kamehameha Highway.



# Kamehameha Highway Stations Group

37.3% Complete

Contract Completion: May '19; Anticipated to be September '19  
Kalauao (Pearlridge) Station – 29.1% Complete



- Completed TPSS pit foundation, walls, and slab.
- Completed pouring Makai entrance building wall at gridline 58.
- Completed Mauka elevator pit pours and commenced escalator pit and walkway.
- Completed falsework and commenced forming/reinforcement of platform girders.



# Kamehameha Highway Stations Group

38.2% Complete

Contract Completion: May '19; Anticipated to be September '19

Hālawā (Aloha Stadium) Station – 20.8% Complete



- Continuing stem wall forming and reinforcement at stairwells/escalators.
- Completed footings/stem walls and slab at TCCR room.
- Commenced platform falsework installation.

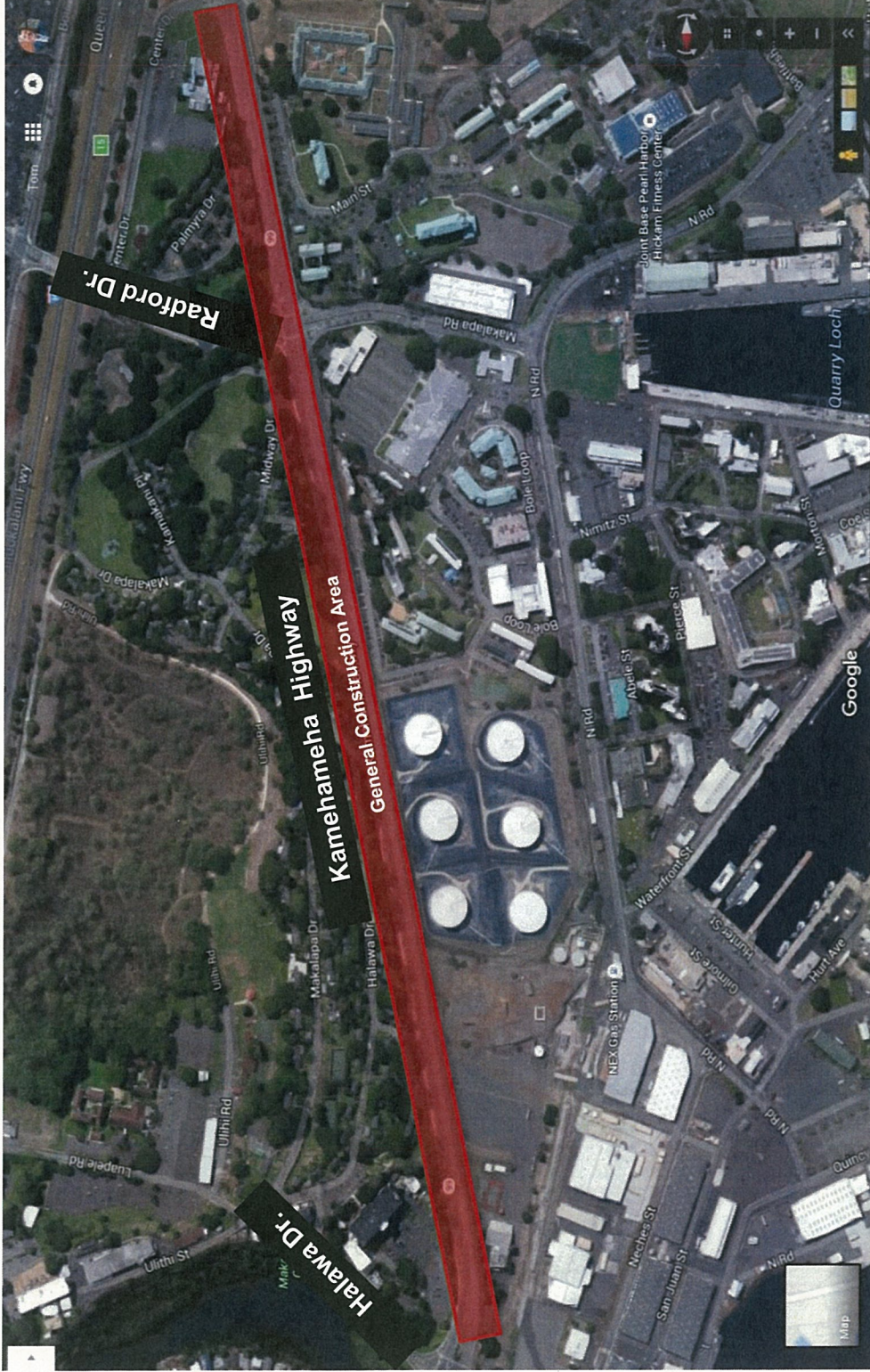


# Traffic





# Kamehameha Highway



Various daytime and nighttime lane closures for utility relocation work and pre-construction work through end of the year.





# Project Wide Construction Update



# West Oahu Stations Group

59% Complete

Contract Completion: July '18; Anticipated to be June '19  
Kualaka'i (East Kapolei) Station – 49.2% Complete



- West concourse slab poured.
- Platform columns to roof at grid lines R:13 poured.
- 100 Kip falsework removal started.



# West Oahu Stations Group

59% Complete

Contract Completion: July '18; Anticipated to be June '19  
Keone'ae (UH-West O'ahu) Station – 65.2% Complete



- Installation of roof conduit continues for West entrance building.
- Elevator frame erection continues.



# West Oahu Stations Group

## 59% Complete

Contract Completion: July '18; Anticipated to be June '19  
Honouliuli (Ho'opili) Station – 60.7% Complete



- Elevator installation continues.
- Conduit installation continues for ground level area.
- Interior work underway for ancillary rooms.
- Balustrade installation underway.



# Farrington Highway Stations Group

76% Complete

Contract Completion: January '19; Anticipated to be March '19

Hō'ae'ae (West Loch) Station – 81% Complete



- Completed installation of platform pavers and 90% of balustrades.
- Hawaiian Electric completing their work prior to turning on the permanent power.
- Installation of the pavement for the Mauka parking lot complete.



# Farrington Highway Stations Group

76% Complete

Contract Completion: January '19; Anticipated to be March '19  
Pouhala (Waipahu Transit Center) Station – 69% Complete



- Installation of fire line and riser ongoing.
- Installing roofing for ancillary building.
- Painters applying primer to underside of structure top roof.
- Continuing installation of electrical panel and fire system conduit.



# Farrington Highway Stations Group

76% Complete

Contract Completion: January '19; Anticipated to be March '19  
Hālaulani (Leeward Community College) Station – 67% Complete



- Installing HVAC and electrical conduit in station entrance.
- Cable Racks installed within the TCCR room.
- Decorative concrete placed at the entrance way to the station.
- Commenced installation of wall tile in the tunnel area.



# University of Hawai'i Park and Ride – Road "B"

29% Complete

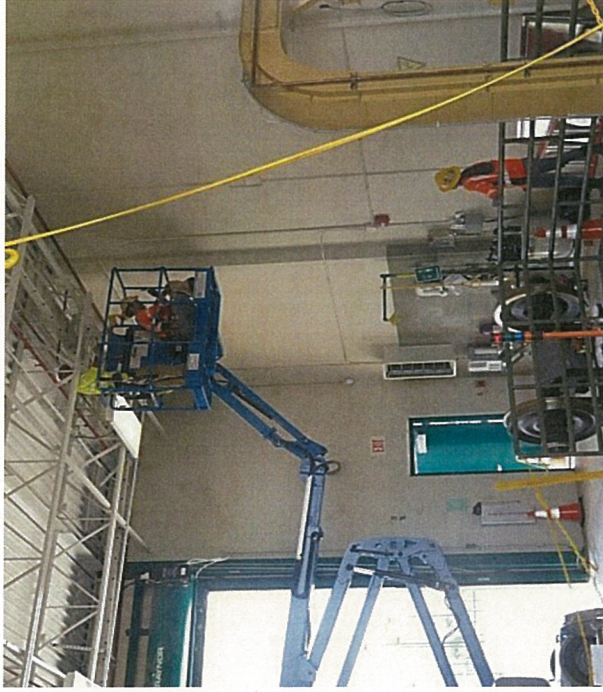
Contract Completion: July '19



- Continuing sewer line installation.
- Completed installation of drainage swale headwall.
- Continuing electrical rough-in.



# Core Systems 53% Completion



Contract Completion  
March 2019

Projected Completion  
October 2025



## Testing

- First phase of functional testing of the interfaces between the vehicle & wayside equipment is expected to begin in 4th Q 2018.

## Testing in Progress

- ATC Wayside Equipment at Hō'ae'ae TCCR.
- COMM Installation Testing in MSF.
- Honouliuli TPSS Static Commissioning.

## MSF Yard

- Communication installation expected to be completed in August 2018.

## Platform Screen Gates

- PSG installation delayed at Honouliuli due to tolerance issues discovered during PSG Survey. Collaborative efforts between contractors are being coordinated to move forward with installation.

## Manufacturing

- All Signal, TES, and SCADA systems are onsite or ready for delivery for Segment 1.
- Waiawa TPSS is scheduled to be delivered to site on August 25, 2018.
- Keone'ae UPS cabinet installation completed on July 19, 2018.
- Honouliuli UPS cabinet installation completed on July 15, 2018.
- Train #3 arrived onsite on August 2, 2018.



# Airport Guideway and Stations

## 27.9% Complete

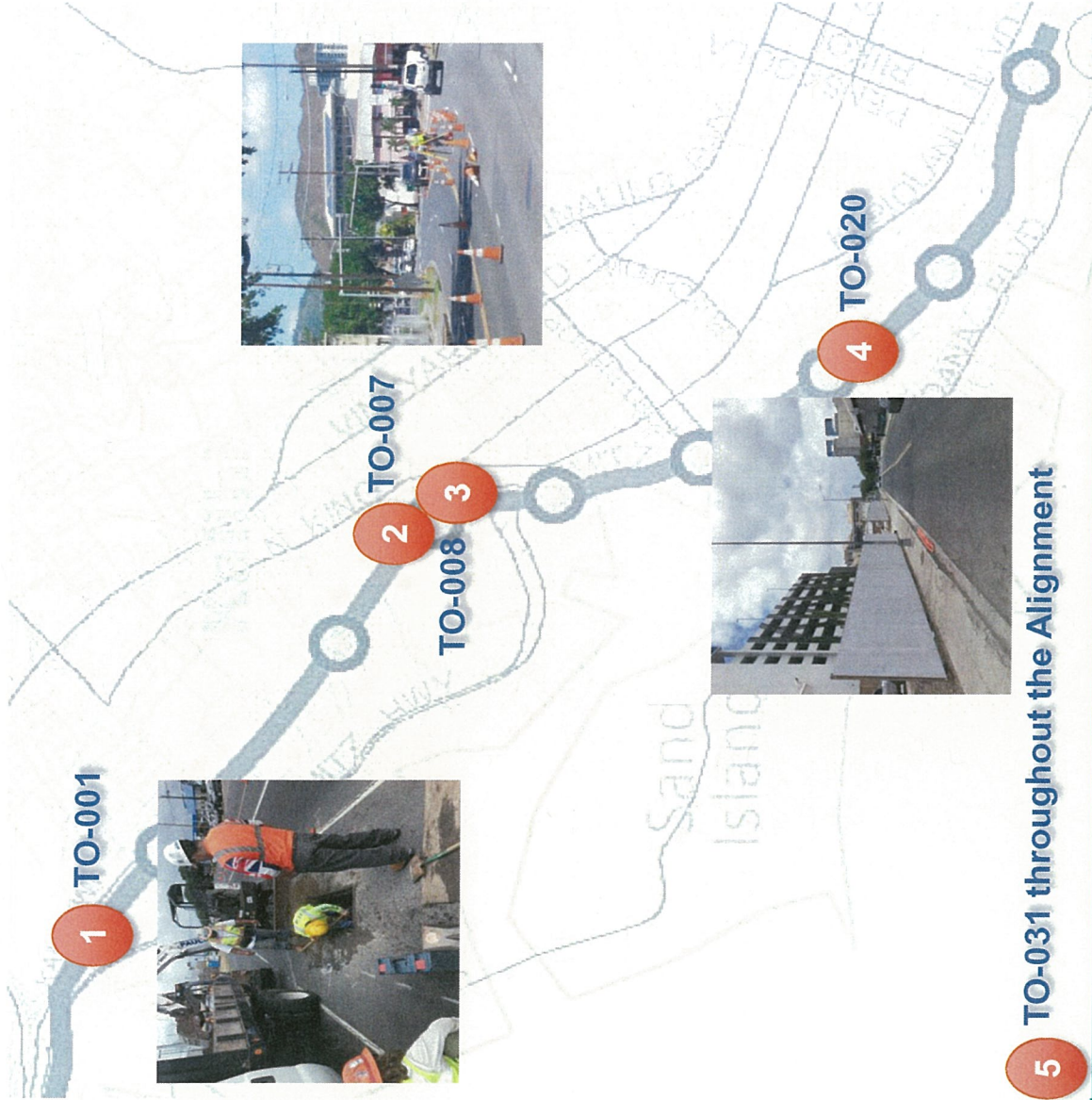
Contract Completion: May 2021



- Completed to date: 83 drilled shaft foundations, 42 piers, and 565 pre-cast segments.
- Daytime traffic maintenance along Kamehameha Hwy between Halawa Drive and Radford Drive with one (1) lane closure in each direction. Work progressing: Drilled shaft and pier installations.
- Phase 1 task of re-framing HECO 138kV lines along Kamehameha Hwy and Radford Drive Eastbound. Daytime travel lane shifts towards the median area for two-week duration.
- Night time traffic maintenance include closures along Kamehameha Hwy between Halawa Drive and Radford Drive with detours at Radford Drive and Kalaloa Street Intersections and along Nimitz Highway Eastbound at the Aolele Street Intersection. Work progressing: Drilled shaft construction, utility relocation, and roadway widening work.



# City Center Utilities Relocation



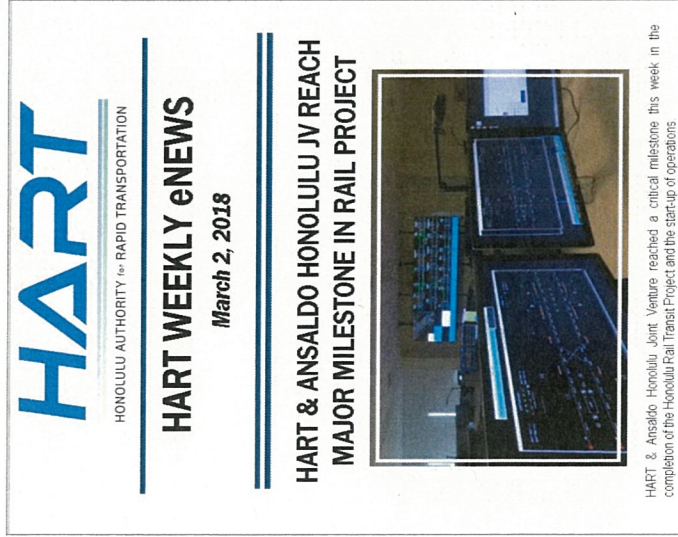
- Long-lead materials for TO-002 wet utilities on Dillingham, Pu'uhale to Kapālama Stream (pending execution) have been purchased and delivered.
- Construction yards are being established along the alignment.
- 5 Construction Task Orders have been executed:
  - TO-001 Wet Utilities on Dillingham, Middle Street to Pu'uhale
  - TO-007 Wet Utilities on Dillingham, Alakawa to Ka'aahi
  - TO-008 Wet Utilities on Ka'aahi
  - TO-020 Wet Utilities on Halekauwila, Keawe to Coral
  - TO-031 Gas Utility Relocations
- Mobilization / Pre-construction activities is being performed on all 5 (public outreach, layout, potholing, and permitting).
- Working with DPP on one-time approvals and trenching permits.

5 TO-031 throughout the Alignment



# Stay Connected

- Weekly Traffic Advisories
- Weekly e-Blast
- Website and Social Media



## HART Rapid Response:

- 24-Hour Project Hotline number 808-566-2299
- Email Inquiries: [info@HonoluluTransit.org](mailto:info@HonoluluTransit.org)
- Social Media Inquiries

*Mahalo!*

**From:** Krantz, Franz <fkrantz@honolulu.gov>  
**Sent:** Monday, August 20, 2018 8:36 AM  
**To:** 'Fink, John'; louise.sper@outfrontmedia.com; davy.murayama@centerplate.com; Blanco, Theresa; David A. K. Matlin; 9Kosich, Frank  
**Cc:** Ross Yamasaki; Michael L. Iosua; Keith Amemiya; David Uchiyama; Chan, Scott L; Ho, Diana C  
**Subject:** RE: August monthly Stadium Authority report- External Affairs committee

Aloha John et al. We were enjoying the state holiday on Friday so I did not get my report in by the deadline.

Nothing major to report since last month. We are still finalizing what will be an amendment to the TOD plan, adding text and changing the maps. I think I can bring a map showing the new boundaries to the next meeting unless it's ok to e-mail to Diana so she can put in the meeting packet at this late date.

Also, there is a state-initiated group that is working on the infrastructure needs for the Halawa area. My guess is Charlie Vitalie or Chris Kinimaka have been updating the Authority members on these efforts.

Let me know if you need additional information.

Mahalo.

Franz Krantz, AICP  
Planner, Community Planning Branch  
Dept of Planning and Permitting  
City & County of Honolulu  
650 S. King Street  
Honolulu, Hawaii 96813  
Ph. 808 768 8046 (O)  
fkrantz@honolulu.gov

**From:** Fink, John [mailto:JFink@kfve.com]  
**Sent:** Friday, August 17, 2018 2:27 PM  
**To:** louise.sper@outfrontmedia.com; davy.murayama@centerplate.com; Blanco, Theresa; Krantz, Franz; David A. K. Matlin; 9Kosich, Frank  
**Cc:** Ross Yamasaki; Michael L. Iosua; Keith Amemiya; David Uchiyama; Chan, Scott L; Diana Ho  
**Subject:** August monthly Stadium Authority report- External Affairs committee

This is just a reminder that your monthly Aloha Stadium report is **due today, August 17 2018**, so that it can be included in the notes to be sent to all of the Stadium Authority Board members before our August 30 Stadium Authority Board meeting. We are required by state sunshine laws to include all relevant notes and developments, so please simply update us as to what has transpired since last month's meeting as it might relate to Aloha Stadium.

*Please send your report to Diana Ho at Aloha Stadium, as well as to me. Again, if you have nothing major or new to report this month, that's fine; just let us know.*

The goal here is to provide the full Board with an update from your area in advance of our monthly meeting in an effort to streamline items, and to allow Board members ample time to decide on whether or not they may have any specific questions for you at the upcoming Stadium Authority monthly meeting.

Many thanks for your efforts on this.

**Stadium Authority- External Affairs Committee outside agencies/vendors: your monthly report due dates for the remainder of 2018 are:**

- October 12
- November 2 (please note the quick turnaround from October 12)
- November 30 (please note the quick turnaround from November 2)

---

**John L. Fink**  
General Manager



**KFVE**

420 Waiakamilo Road, Suite #205 | Honolulu, Hawaii 96817  
Direct: 808.847.9328 | Fax: 808.847.9315 | Email: [jfink@kfve.com](mailto:jfink@kfve.com)

- + HAWAII NEWS NOW AT 8:00a, 6:30p, and 9:00p
- + MERRIE MONARCH HULA FESTIVAL
- + KEIKI HULA COMPETITION
- + LOCAL PROGRAMMING EVERY NIGHT

**John L. Fink**  
General Manager



**KFVE**

420 Waiakamilo Road, Suite #205 | Honolulu, Hawaii 96817  
Direct: 808.847.9328 | Fax: 808.847.9315 | Email: [jfink@kfve.com](mailto:jfink@kfve.com)

- + HAWAII NEWS NOW AT 8:00a, 6:30p, and 9:00p
- + MERRIE MONARCH HULA FESTIVAL
- + KEIKI HULA COMPETITION
- + LOCAL PROGRAMMING EVERY NIGHT

HIC-TOD Report  
For  
Stadium Authority Board Meeting  
30 August 2018

---

1. Halawa Area P.I.G. met on 20 July in AS Conference Room. PBR was introduced as the Consultant to assess the infrastructure needs for all the HART station areas. Stadium Station is one of the first three station they are concentrating on.
2. There will be a design charrette for our station on 20 Sept 2018 at 8:30 am in the Hospitality Room
3. Next Meeting: 14 August 2018
  - a. Presentation on Siting Emerging Growth Industries in TOD Areas, presented by Belt Collins
  - b. Presentation by DBEDT on Opportunity Zones Potential in Hawaii



## Monthly Report

Governance Committee  
August 2018

---

The Governance Committee is a standing committee of the Board, whose responsibility is to address matters of board health and function for the purpose of improving policy development and operational oversight, in service to the mission of the Stadium Authority.

### Committee Members

Ross Yamasaki – Chair  
Scot Long – Member

---

### Committee Activity

- The committee did not meet this month

### Committee Issues

- Clarification on Authority governance and ethics compliance, specific to mission of the Authority.
  - Source – legacy issue
  - Status – pending