

### **May Stadium Board Meeting Marketing Update**

Marketing will continue to promote and explore new opportunities for the Aloha Stadium during the off season. In addition, we continue to focus on the following items:

#### **1. Upgrade facility/event collateral**

- In-house: finalized photos and copy for fact sheets. Under review and will also consult with HTA on feedback.

#### **2. Update and maintain website**

- Continue to maintain and update the website with current events and information on a weekly base.

#### **3. Promote facility and events through social media and ongoing public relations efforts**

- Continue to promote all activities and events through social media outlets (Instagram, FB, Twitter, YouTube- as needed).

- Continue to work with current clients to assist with their events and possible future events.

#### **4. Miscellaneous**

- Focusing on employment recruitment throughout May and June. Advertising to include: Staradvertiser.com, press releases, onsite signage, and social media. Just completed the Work Force Job Fair May 16<sup>th</sup> at the Blaisdell. Had great responses and onsite hiring.

- Continue to push summer stadium tours with online ad and advertorial on Hawaii.com as part of the Star Advertiser buy.

- Working with local promoters for potential events/concerts.

- Continue booking all VIP areas for the upcoming football season.

- Finalizing entertainment for upcoming football season – pre-game experience.

- Working with UH and Outfront Media for various activities during the upcoming football season.

- Working on new south corridor “museum” materials to be in place prior to the football season.

- Continue to work closely with OutFront Media (current/potential new sponsors) to create new events and activities during the season and off-season.

- Continue to meet weekly with Centerplate and Krysti Peacock/Moxie Agency to create new events/activities during swap meets.

- Continue to schedule/coordinate public and private (summer school sessions) stadium tours.

MONTHLY SECURITY REPORT TO THE BOARD

The following is a brief summary of security related events and/or incidents which occurred from April 1, 2018, through April 30, 2018.

Jr Prep Sports America (JPSA) Youth Football, April 7, 14, 21 & 28, 2018  
No Security Incidents during the four dates.

Swap Meets in April 2018

Stadium Nurses reported nine (9) Medical Assistance Calls during Swap Meets in April 2018. Eight (8) cases were Injured Cared For (ICF); one case, injured person was evaluated & treated by Stadium Nurse, then transported by Ambulance to Emergency Room. Second ICF case, injured person was evaluated & treated by Stadium Nurse, then transported by her husband to Emergency Room. The other six (6) ICF cases, injured person was evaluated & treated by Stadium Nurse, then released.

One (1) case was Sick Cared For (SCF); injured person was evaluated & treated by Stadium Nurse, then transported by Ambulance to Emergency Room.

Conclusion

Prepared and submitted by,



Neal O. Sakamoto, Stadium Security Officer  
05-21-2018, 1835hrs

Engineering Dept. Report For  
Stadium Authority Board Meeting  
31 May 2018

1. **H&S 4 Contract Work**
  - a. Contractor working on Seat plates in Orange Areas.
    - i. Completed Work on Orange FF-KK. Was open for Graduation.
    - ii. Continuing work on orange F-K
    - iii. Started Electric room floor work.
2. **H&S 5 Work**
  - a. Out for bid on 7 May 2018. Bids due by 7 June 2018
  - b. Held Pre-bid conference at site on 11 May 2018
3. **H&S 6 work**
  - a. No money allotted for H&S in FY2019 Budget
  - b. AS Mgmt. met with DAGS to discuss methods for performing major H&S work after Phase 5.
  - c. Funding for same up in the air.
4. **T-Mobile Cellular**
  - a. Met with T-Mobile to discuss the installation of their cellular antennae in the stadium.
5. **Maintenance Items:**
  - a. Automatic Switch for power installed. Settings approved by HECO. Waiting to schedule setting modifications
  - b. Elevator door control upgrade
    - i. Longest contiguous downtime for elevator will now only be 1 to 2 weeks.
    - ii. Kone has parts on order. Awaiting shipment to island.
  - c. Restriping UHPL to allow for 9' wide spaces.
  - d. Various electrical and plumbing repairs continue
  - e. New lighting control panel installed for Field Lights
6. **Force Main System Improvements**
  - a. Work has started. Installation to be completed this month.
  - b. Scheduled to be operation 4-6 months.
  - c. Drawings are available for review, if anyone is interested.
7. **HART Work in Bus Lot**
  - a. Only work left is topsoil behind new concrete curbs.
8. **HART Station in Kam Lot**
  - a. Construction continues by NAN
9. **Safety**
  - a. Looking to contract for long term oversight by consultant.
10. **New Stadium**
  - a. Awaiting selection committee's decision on consultants for MP/EIS and final contract with same.



Mauka Side complete



Beam staged under Electrical room



Makai Side under repair



Force main Bypass in bus lot



# **ALOHA**

## **SPORTS PROPERTIES**

**Stadium Authority Meeting  
May 31, 2018**

### **May Update**

- Starting sales cycle for FY19 (2018 Fall Football)
  - FY19 OUTFRONT revenue goal will be 10% increase year-over-year
  - Ongoing conversations with IMG/UH to identify possible ways to work together on behalf of mutually shared corporate partners
  - Regularly meeting with Stadium marketing/management for new sponsorship and advertising opportunities
- FY19 (July 1, 2018 – June 30, 2019) Corporate Partners:
  - Hawaiian Tel Federal Credit Union, Nissan, Heineken, Bank of Hawaii, Anheuser-Busch Sales of Hawaii (Bud Light), Jack in the Box, Gentry Homes, First Hawaiian Bank, Hamada Financial Group, Altres Staffing, UFC Gym, Midas Hawaii, Pest Tech Hawaii, Hawaii Self Storage, Ruby Tuesday Hawaii, Jamba Juice, Toyota Hawaii, Tri-West, Kelly Eisenberg Hotdogs, Southern Turf Hawaii, Noh Foods of Hawaii, Island Insurance, Meadow Gold Dairies, Damien Memorial School, HGEA
- Total FY19 OUTFRONT advertising revenue to-date 85% of FY18 revenue
- New President appointed to OUTFRONT Media Sports, Bill Cartwright (formerly SVP OUTFRONT Media Sports)

Louise Sper  
General Manager, Aloha Sports Properties  
louise.sper@outfrontmedia.com  
(o) 808.517.4035 / (m) 310.901.1921



Centerplate

Monthly Report  
Stadium Authority Meeting  
5/31/2018

ALOHA STADIUM SWAP MEET AND MARKETPLACE  
April 2018

Shopper Attendance:

April Monthly Attendance		Days Open	Daily Average	Coupons	Paid Attendance	Average Daily Paid Attendance
2017	94,923	14	6,780	301	94,622	6,759
2018	91,296	13	7,023	60	91,236	7,018
Difference	(3,627)	-1	243	-241	(3,386)	259
%	-4%		4%	-80%	-4%	4%

Vendor Attendance:

April Total Stall Sales		Days Open	D,E, & F Total Stalls	Daily Average Stalls	A,B,C Total Stalls	Daily Average Stalls
2017	10,106	14	5,375	384	4,731	338
2018	8,879	13	4,772	367	4,107	316
Difference	(1,227)	-1	(603)	(17)	(624)	(22)
%	-12%		-11%	-4%	-13%	-7%

Operations Information:

One less Sunday from prior year.

Rain on all but one weekend causing a decrease in daily vendors.

# Honolulu Rail Transit Project Update

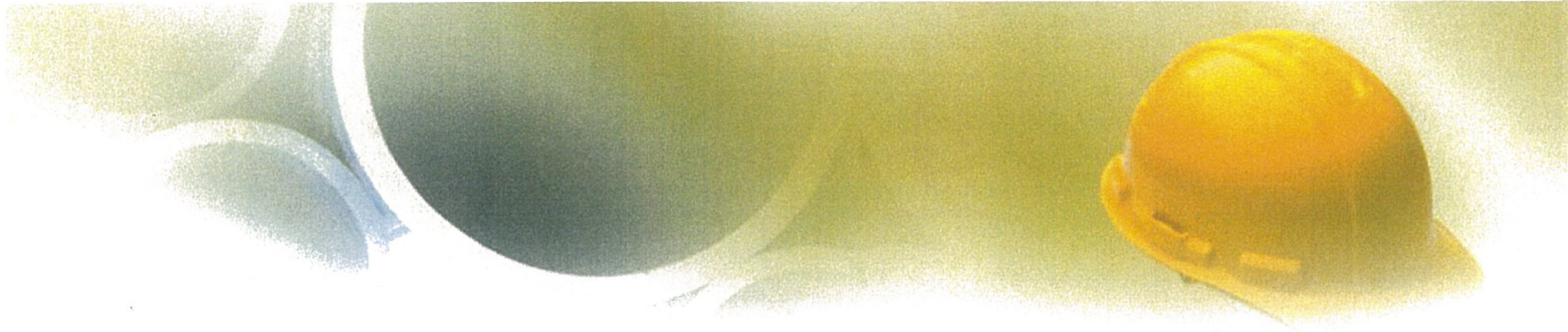
## May 31, 2018

### Aloha Stadium Authority



H O N O L U L U R A I L T R A N S I T P R O J E C T  
[www.HONOLULUTRANSIT.ORG](http://www.HONOLULUTRANSIT.ORG)

**HART**  
HONOLULU AUTHORITY FOR RAPID TRANSPORTATION



# Status of Activities



## West Oahu-Farrington Guideway (Kapolei to Pearl Highlands)



- WOFG is 99.8 % complete.
- Punchlist work continues with 1 item remaining.
- Working with Contractor to finalize all closeout documentation.
- On-going discussions with the Contractor to conclude work and settle commercial matters.

## Kamehameha Highway Guideway (Pearl Highlands to Stadium)



- KHG is 99.9% complete.
- Punchlist work continues with 4 items remaining.
- Working with Contractor to finalize all closeout documentation.
- On-going discussions with the Contractor to conclude work and settle commercial matters.

# Kamehameha Highway Stations

24.9% Complete

Contract Completion: May 2019; Anticipated: August 2019

Waiawa (Pearl Highlands) Station – 43.6% Complete



- Pour Area – Completed Section 7 concrete pours and Section 4 wall curbs.
- Platform Box Beam Girder - Completed Sections 1 & 3 falsework and concrete pours for Sections 2 & 4 bottom slab & wall.
- Continuing MEP rough-in.

# Kamehameha Highway Stations

24.9% Complete

Contract Completion: May 2019; Anticipated: August 2019

Kalauao (Pearlridge) Station – 17.4% Complete



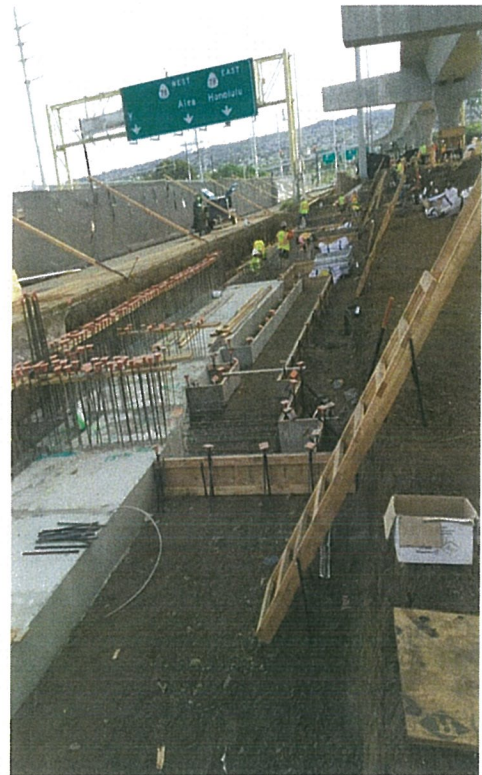
- Commenced installation of CMU walls at ancillary building.
- Installed negative/positive power manholes.
- Commenced implementation of traffic control plan for falsework installation for box beam girder.

# Kamehameha Highway Stations

24.9% Complete

Contract Completion: May 2019; Anticipated: August 2019

Hālawā (Aloha Stadium) Station – 5.6% Complete

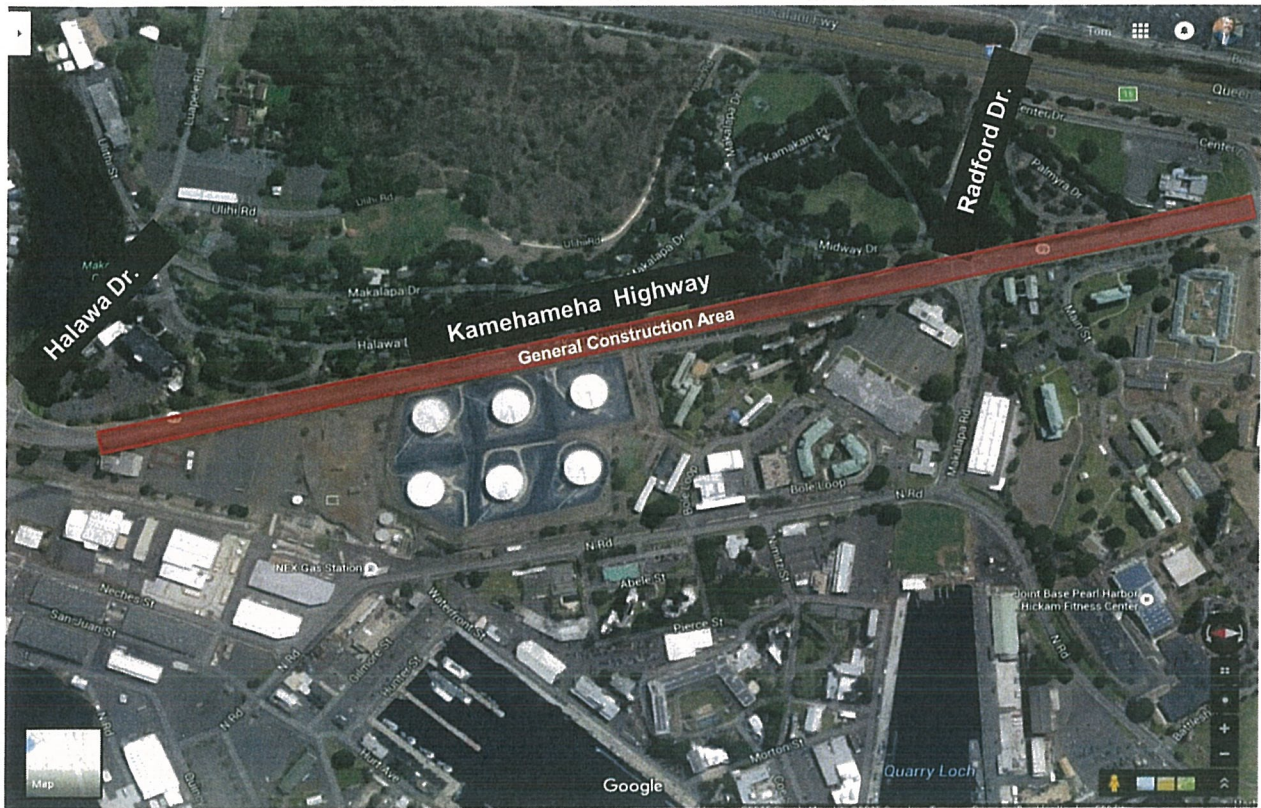


- Continue base course and fine grading at North Parking Lot.
- Completed grounding grid layout and excavation.
- Completed retaining wall excavation and forming/reinforcement of the foundation.

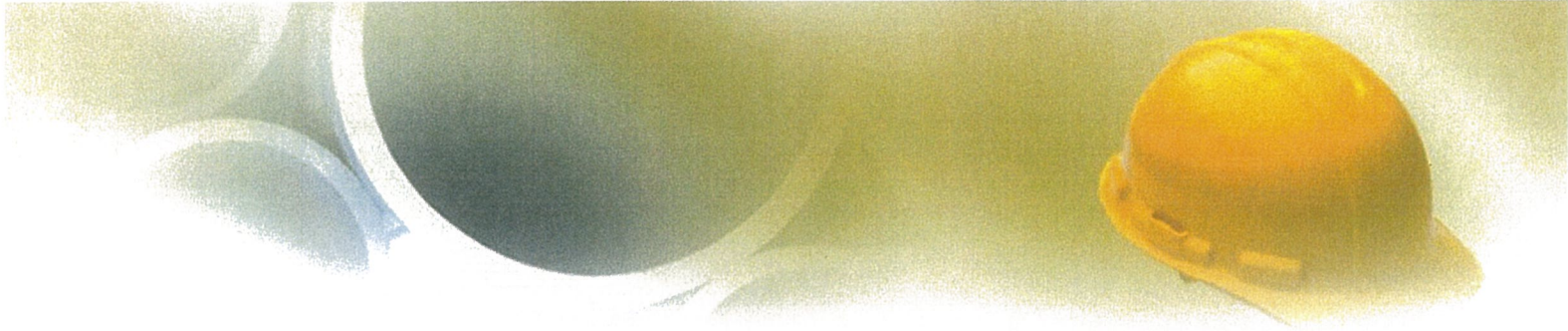
# Traffic



# Kamehameha Highway



Various daytime and nighttime lane closures for utility relocation work and pre-construction work through end of the year.



# Project Wide Construction Update

# West Oahu Stations Group

49.1% Complete

Contract Completion: March '18; Anticipated to be May '19

Kualaka'i (East Kapolei) Station – 40.9% Complete



- Completed post tensioning work at box girders.
- Formwork and shoring removal completed for the structural slab.
- Work started for falsework erection for elevated beams at roof level.



10

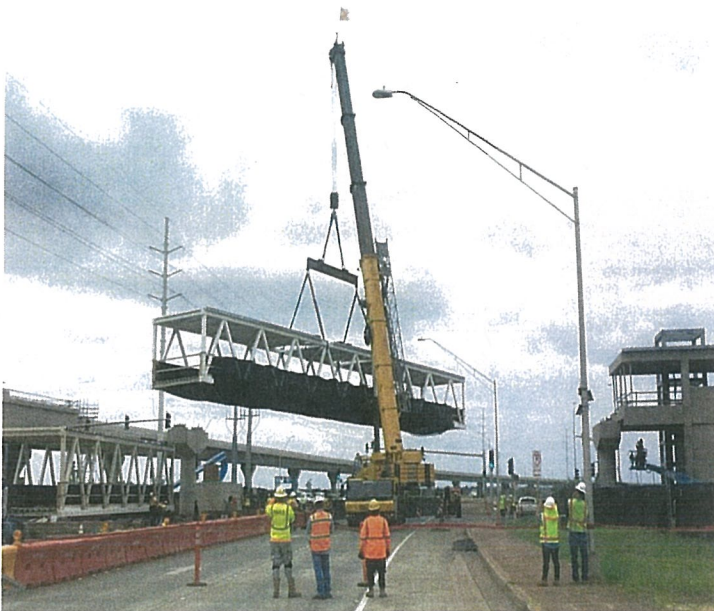


# West Oahu Stations Group

49.1% Complete

Contract Completion: March '18; Anticipated to be May '19

Keone'ae (UH-West O'ahu) Station – 52.1% Complete



- Installation of escalator continues for West Entrance Building.
- Pedestrian Bridges over Kualakai Highway segment installed.
- Completed formwork and decking for the Concourse elevated concrete beams and slabs.

## West Oahu Stations Group

49.1% Complete

Contract Completion: March '18; Anticipated to be May '19

Honouliuli (Ho'opili) Station - 53.9% Complete



- Installation of Elevators #1 and #2 continues.
- Continued installation of negative and positive duct banks to TPSS.
- Fire rated ceiling installation continues at the Ancillary Rooms.

# Farrington Highway Stations Group

65% Complete

Contract Completion: January 2018; Anticipated: February 2019

Hō'ae'ae (West Loch) Station – 73% Complete



- Continuing site irrigation and landscaping.
- Continuing installation of overhead phenolic electrical conduit.
- Installation of platform PSG base plates.
- Continuing sidewalk and curb installations.

# Farrington Highway Stations Group

65% Complete

Contract Completion: January 2018; Anticipated: February 2019

Pouhala (Waipahu Transit Center) Station – 62% Complete



- Completed installation of ancillary building CMU wall.
- Completed installation of ancillary roof concrete planks.
- Installation of PSG base plates in progress.
- Makai station entrance structural steel erection in progress.

# Farrington Highway Stations Group

65% Complete

Contract Completion: January 2018; Anticipated: February 2019

Hālaulani (Leeward Community College) Station – 53% Complete



- Completed TPO roofing at station entrance lantern structure.
- Completed CMU walls along stairwell.
- Elevator installation in progress.
- Started phenolic electrical conduit installation from concourse to platform.

# University of Hawaii Park and Ride - Road "B"

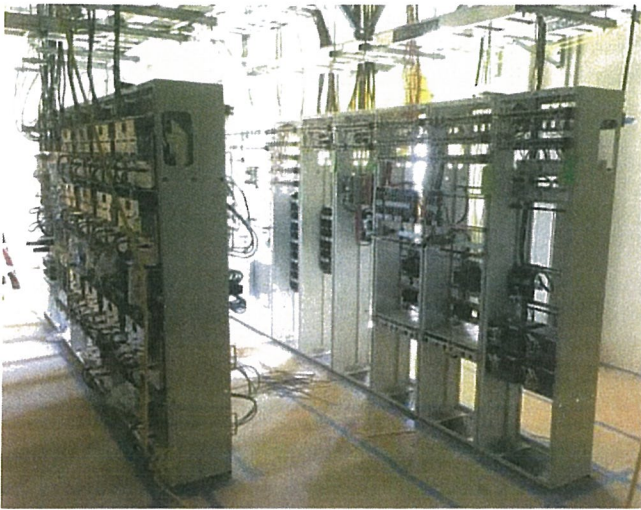
## 13.4% Complete

Contract Completion Date: July 2019



- Continue relocating existing stockpile to new area.
- Completed the clear and grubbing for eastern third of the proposed Park N Ride area.
- Scarification and compaction is complete.
- Native fill material to start next week.
- Continue rough grade the roadway subgrade between drainage structure area.

## Core Systems



### Testing

- Functional testing of the interfaces between the vehicle & wayside equipment is expected to begin in 3<sup>rd</sup> Q 2018.
- Blue Light Station testing is completed.
- Hō'ae'ae TPSS testing is completed.
- Hō'ae'ae ATC testing is completed.



### MSF Yard

- MSF Yard Systems is over 85% complete & installation is expected to be completed in June '18. Yard third rail energized on May 17, 2018.

### MSF Buildings

- MSF Building Systems is over 80% complete & installation is expected to be completed in June '18.

### Manufacturing

- All Signal, TES, and SCADA systems are ready for delivery for Segment 1.
- FDAS equipment for Keone'ae and Hō'ae'ae Stations is on O'ahu.
- Honouliuli TPSS was delivered on site on May 20, 2018.

# Airport Guideway and Stations

## 21.2% Complete

Contract Completion: May 2021

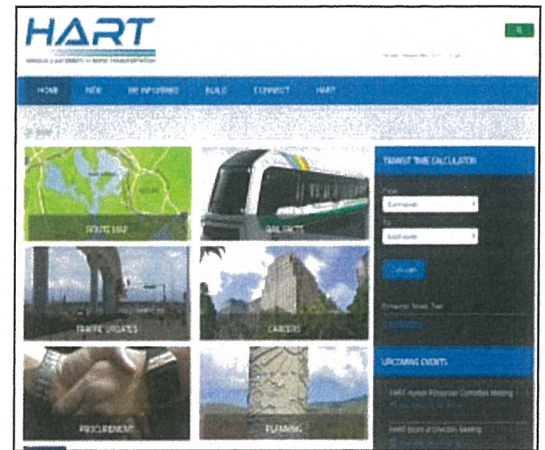


- Completed to date (5/18/2018): 53 drilled shaft foundations, 20 piers, and 191 pre-cast segments.
- Roadway widening work nearing completion along Nimitz Highway.
- Daytime traffic maintenance includes Kamehameha Hwy from H1 on ramp, past Center Drive, Halawa Drive and Radford Drive with one (1) lane closure in each direction.
- Night time traffic maintenance include detours along Nimitz Highway in both East and West directions.



# Stay Connected

- Weekly Traffic Advisories
- Weekly e-Blast
- Website and Social Media



## HART Rapid Response:

- 24-Hour Project Hotline number 808-566-2299
- Email Inquiries: [info@HonoluluTransit.org](mailto:info@HonoluluTransit.org)
- Social Media Inquiries

*Mahalo!*

TRANSIT-ORIENTED DEVELOPMENT (TOD)  
MAY, 2018

HALAWA AREA TOD PLAN (Franz Kraintz)

DPP staff met with the staff of Council Planning Committee Chair Ikaika Anderson on May 4 to follow up on the proposal to amend the boundaries of the TOD Special District. The purpose was to cover exactly what parts of the plan, i.e., maps and text that would have to be changed. Also some questions were asked about infrastructure capacity and how the phasing of the development might change. It was suggested, if possible to contact, those infrastructure agencies to get their assessment of adding this area but we already know, more infrastructure capacity is needed to support the level of development in the plan.

HIC-TOD Report  
For  
Stadium Authority Board Meeting  
31 May 2018

1. Review of pertinent legislation affecting TOD
2. CCH presented the newly adopted Affordable Housing Ordinance
  - a. 201H Impact
  - b. TOD Impact
3. Review of Permitted Interaction Groups (PIG)
  - a. Discussed proper procedures
  - b. Neighbor Island Subcommittee Report given
  - c. Tentative PIG Meeting Schedule Presented (included Halawa Area TOD)
4. Next Meeting: 12 June 2018
  - a. State TOD Planning and Implementation Project
  - b. Infrastructure Financing for TOD and Affordable Housing Presentation

Stadium Authority Board  
Legislative Committee  
Status - 2018 Leg Session  
May 31, 2018

Hawaii State Legislature  
Regular Session of 2018  
Legislative Statistics  
as of May 10, 2018

	Introduced	Passed	Acts	Vetoed
House bills	1153	134	10	0
Senate bills	1107	95	2	0
<b>Total</b>	<b>2260</b>	<b>229</b>	<b>12</b>	<b>0</b>

*\*Passed total includes SB2922 SD1 HD1 which proposes to amend the Constitution of the State of Hawaii.*

Resolutions		
	Introduced	Adopted
House Concurrent Resolutions	245	25
House Resolutions	230	65
Senate Concurrent Resolutions	194	30
Senate Resolutions	146	58
<b>Total</b>	<b>815</b>	<b>178</b>

IMPORTANT DATES		
35 <sup>th</sup> day after adjournment sine die	Monday June 25, 2018	Ten days' notice of plans to return a bill with objections deadline (see explanation below).
45 <sup>th</sup> day after adjournment sine die	Tuesday July 10, 2018 *	The governor shall have forty-five days, after the adjournment of the legislature sine die, to consider bills presented to the governor less than ten days before such adjournment, or presented after adjournment, and any such bill shall become law on the forty-fifth day unless the governor by proclamation shall have given ten days' notice to the legislature that the governor plans to return such bill with the governor's objections on that day. (Source: Hawaii State Constitution, Article III, section XVI)

HB 1900, HD1, SD2, CD1 - Pending bill review and decision by the Governor.

\*Governor has until July 10, 2018 to:

- Approve the bill to become law
- Veto the bill or line-item veto the bill, as applicable.
- Allow the bill to become law, absent of the Governor's signature.

AGS-889 [(-2.00/-1.00; -222,604B), (0-C)]

ID	Task Mode	Task Name	Duration	Start	Finish
1		FY 2017 Funding Grant (\$6MM)	796 days	7/1/16	7/20/19
2		Design, Bid and Award Contact	82 wks	7/1/16	1/25/18
3		Balance of H&S 4 Construction	118 days	2/18/18	7/31/18
4		H&S 5 Actual Construction	22 wks	2/19/19	7/20/19
5		FY 2018 No Funds Granted	0 days	7/1/17	7/1/17
6		FY 2019 No Funds Granted	0 days	7/1/18	7/1/18
7		FY 2020 Funding Grant (\$???)	540 days	7/1/19	7/23/21
8		Design, Bid and Award Contact	52 wks	7/1/19	6/26/20
9		Potential Construction	52 wks	7/27/20	7/23/21

**Period of No Construction**  
 52 wks 7/29/19 7/27/20

**It takes approximately 52 weeks from Grant to Start of Construction. (Assuming work can be performed during Football Season)**

H&S 5 work will be completed by August 2019. Since no money was allocated for FY 2020, there will be no H&S work completed in the spring and summer of 2020. This lack of funding has the following consequences:

The 2016 WJE report listed several items requiring H&S Repair work. The following items were not included in H&S 5 and will therefore not be completed due to lack of funds:

- Replacement of majority of Makai south outer concourse deck
- Mauka Elevator replacement
- Replacement of Mauka South Outer concourse deck
- Seat plate repairs on Mauka side
- Corrosion mitigation of north and south steel bracing
- Painting of weathering steel
- Any additional repairs which come to light in the next WJE Structural review of the stadium, which is due by the end of 2018
- Any major plumbing and/or electrical repairs and breaks which can occur at any time.

Repair of asphalt parking lot which is deteriorating at a rapid pace, and may cause hazards to pedestrians and wheelchair occupants for both events and the swap meet.

Project: Project1  
 Date: 5/25/18