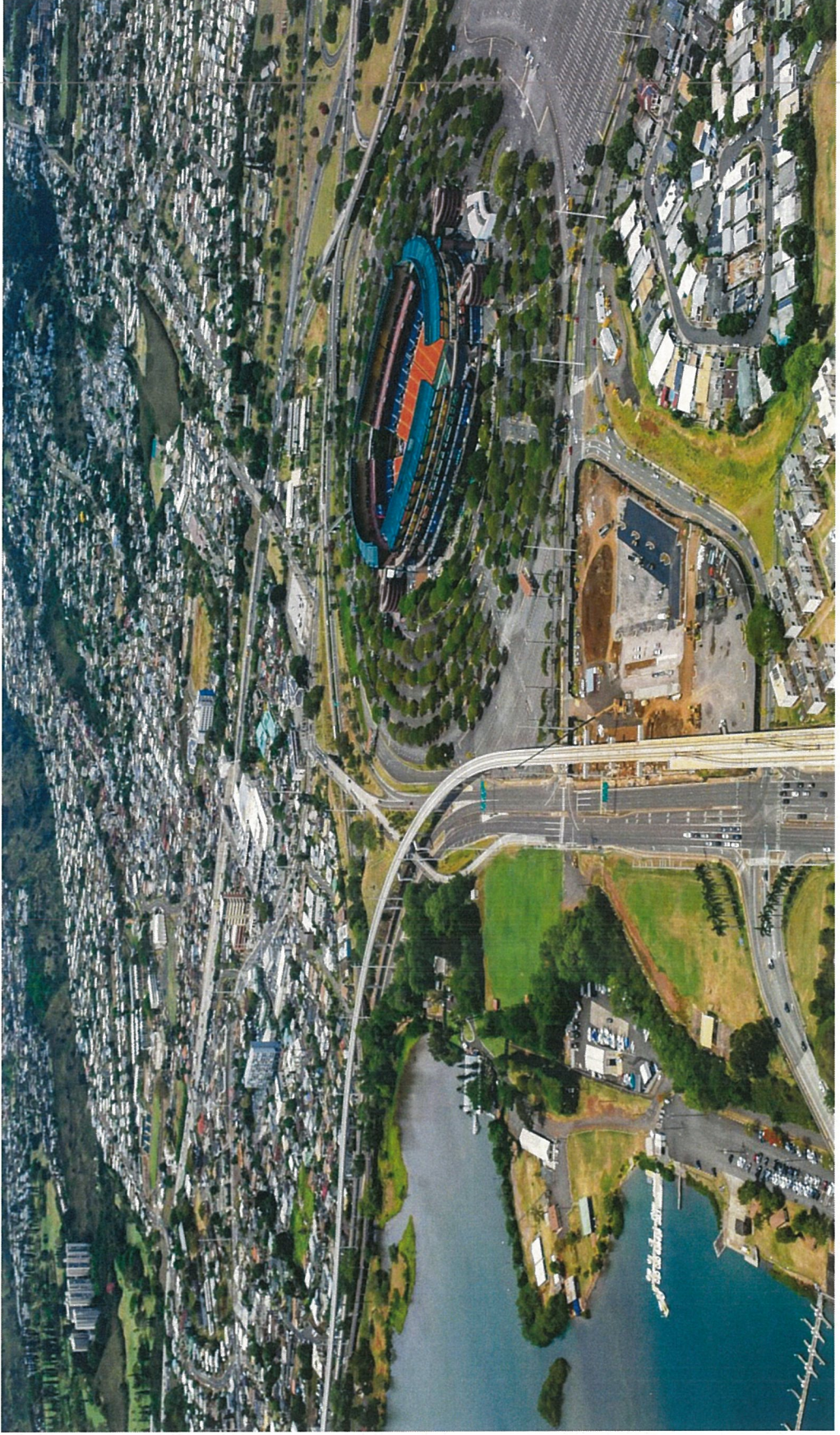


Honolulu Rail Transit Project Update

June 28, 2018

Aloha Stadium Authority



IV.D.3.b.



Status of Activities

West Oahu-Farrington Guideway (Kapolei to Pearl Highlands)



- WOFH is 99.8% complete.
- Punchlist work continues with 1 item remaining.
- Working with Contractor to finalize all closeout documentation.
- On-going discussions with the Contractor to conclude work and settle commercial matters.

Kamehameha Highway Guideway (Pearl Highlands to Stadium)



- KHG is 99.9% complete.
- Punchlist work continues with 4 items remaining.
- Working with Contractor to finalize all closeout documentation.
- On-going discussions with the Contractor to conclude work and settle commercial matters.

Kamehameha Highway Stations Group

31.7% Complete

Contract Completion: May '19; Anticipated to be August '19

Waiawa (Pearl Highlands) Station – 47.2% Complete



- Completed pouring bottom slabs and walls at platform box beam girders 1 and 3.
- Completed structural concrete pours at platform box beam girders 2 and 4.
- Commenced installing electrical ductbank and vaults along Kamehameha Highway.

Kamehameha Highway Stations Group

31.7% Complete

Contract Completion: May '19; Anticipated to be August '19
Kalauao (Pearlridge) Station – 19.8% Complete



- Completed installation of all Makai pile caps/grade beams.
- Continued installation of columns and beams for the Makai pedestrian walkway.
- Completed walls and roof for the ancillary building.
- Commenced falsework installation in support of the Mauka platform box beam girder.

Kamehameha Highway Stations Group

31.7% Complete

Contract Completion: May '19; Anticipated to be August '19
Hālawā (Aloha Stadium) Station – 11.4% Complete

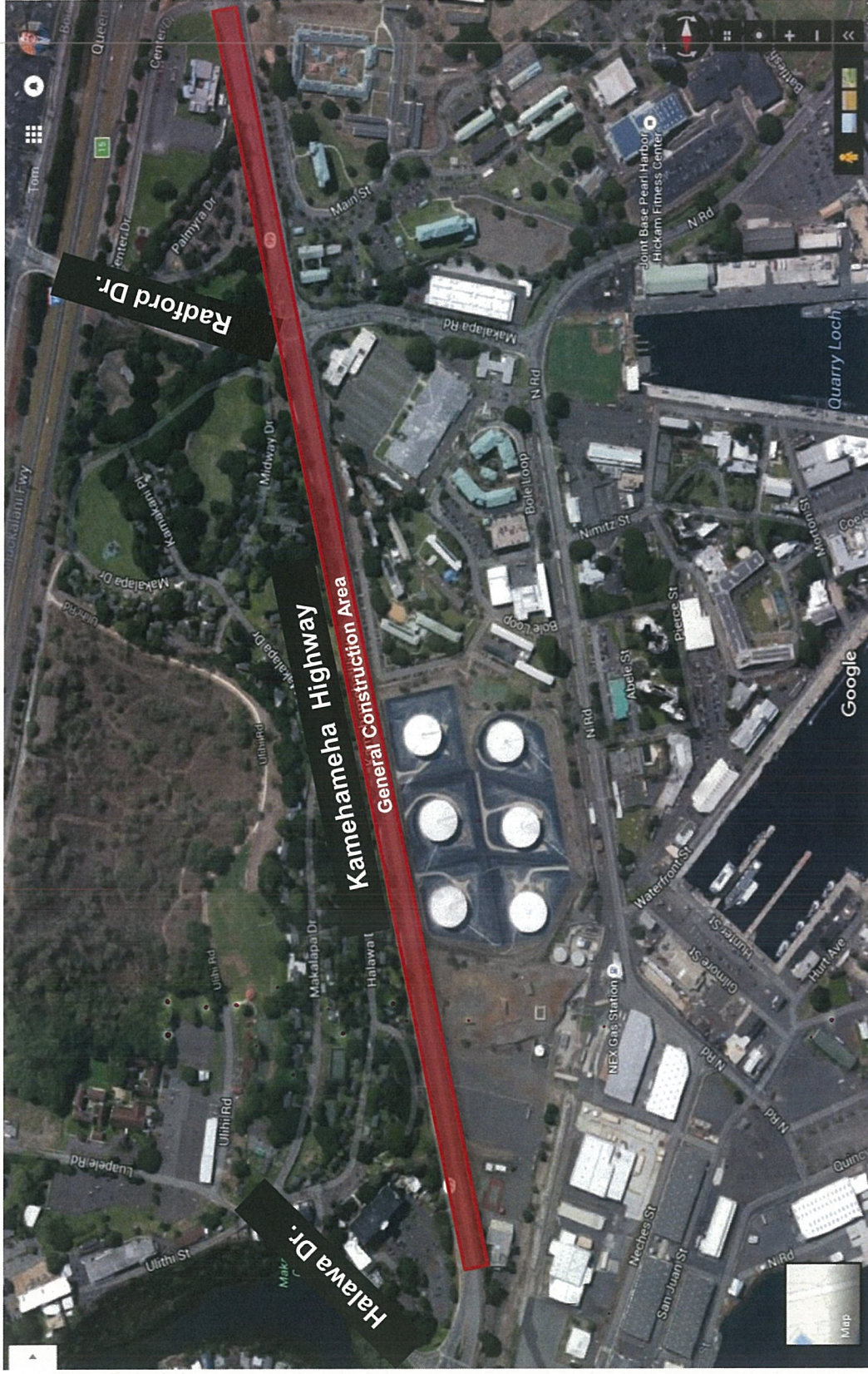


- Completed base course paving at first portion of North Parking Lot.
- Continued excavation and grading at remaining portion of North Parking Lot.
- Completed pouring retaining wall and adjacent foundation footings, walls, and pits.
- Continued installation of foundation footings, walls, and pits on Mauka side of station.

Traffic



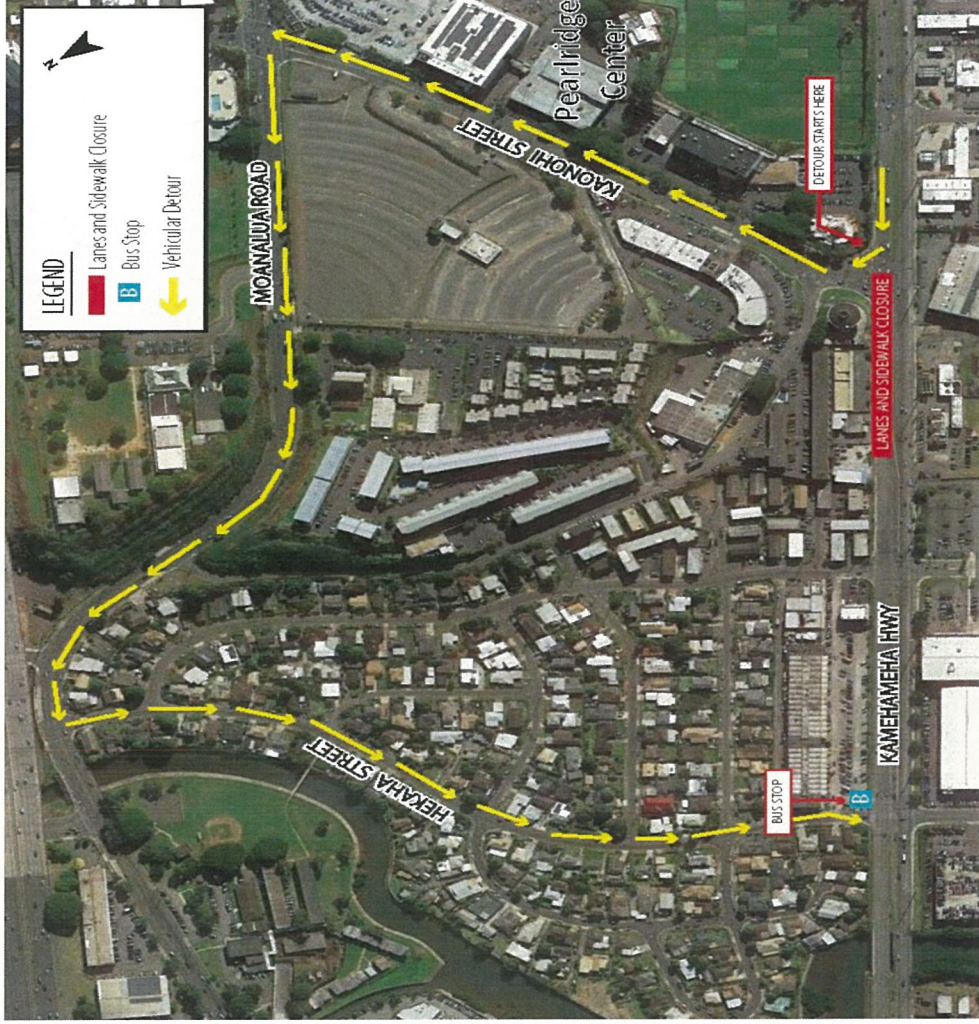
Kamehameha Highway



Various daytime and nighttime lane closures for utility relocation work and pre-construction work through end of the year.

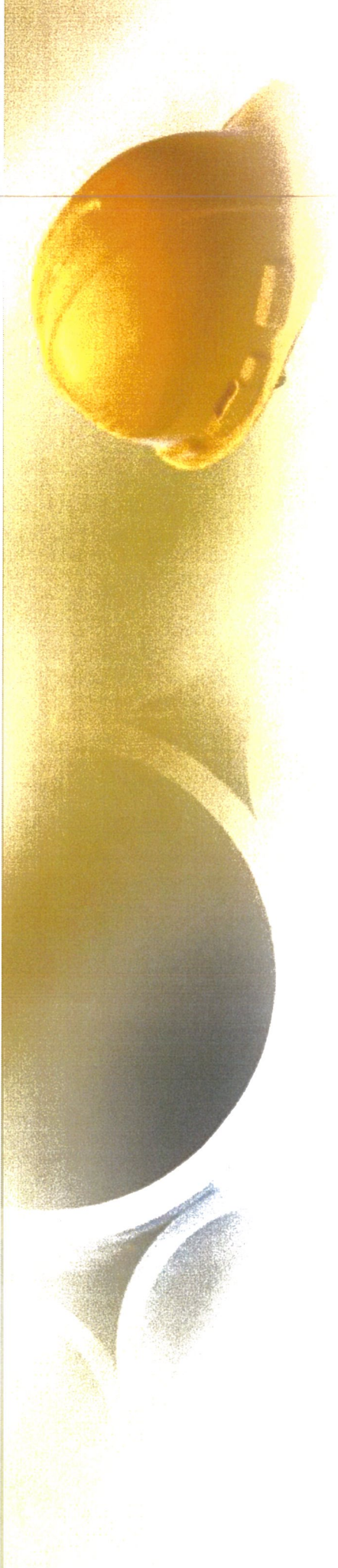
Aiea Traffic Advisory

Temporary Re-Routing Traffic around Kalauao (Pearlridge) Station
Westbound between Kaonohi and Kanuku Streets



Week Nights from 9:00 p.m. to 6:00 a.m.

June 11 through June 30, 2018.

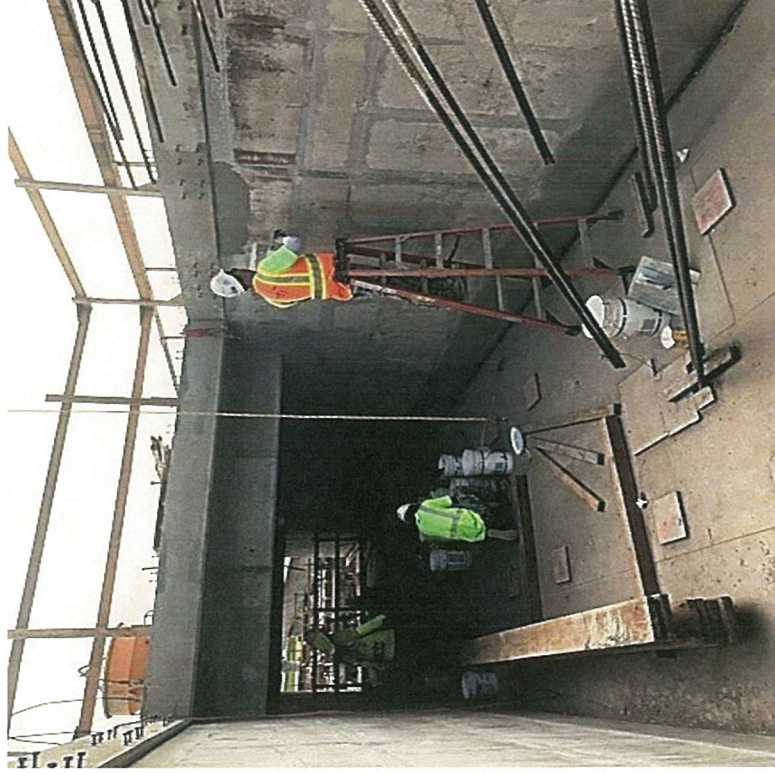


Project Wide Construction Update

West Oahu Stations Group

51.9% Complete

Contract Completion: March '18; Anticipated to be May '19
Kualaka'i (East Kapolei) Station – 42.4% Complete

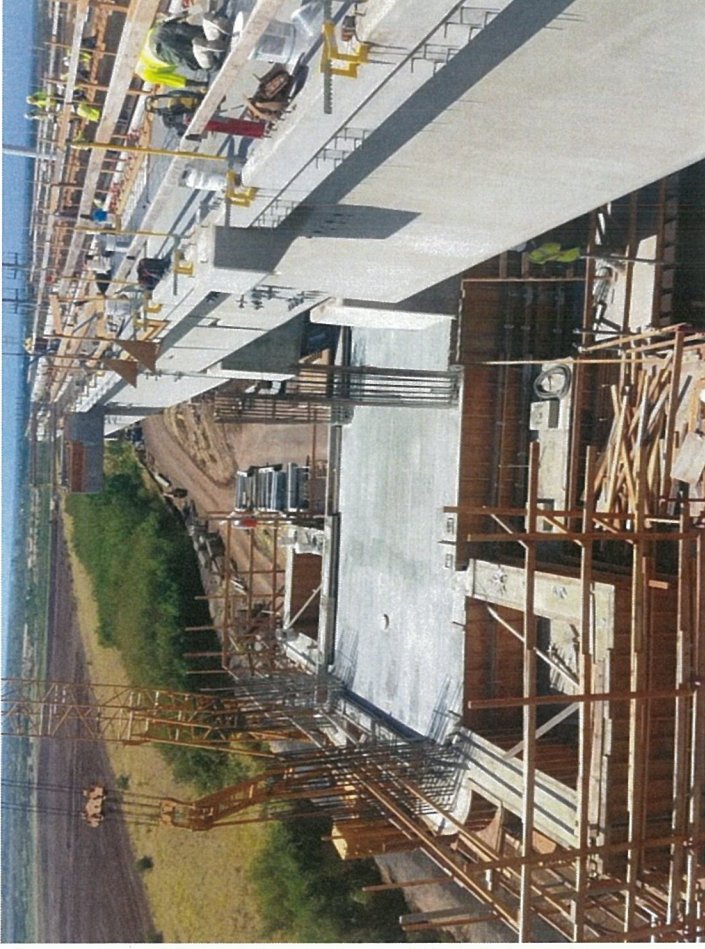


- Shoring removal underway for the platform level.
- PSG baseplate concrete pours at box girders underway for platform level.
- Concrete slab and column formwork, reinforcement, and pours continue on the concourse level.

West Oahu Stations Group

51.9% Complete

Contract Completion: March '18; Anticipated to be May '19
Keone'ae (UH-West O'ahu) Station – 56.0% Complete



- Installation of roof conduit continues for West entrance building.
- Column pours underway for concourse level.
- PSG stud installation underway for platform level.

West Oahu Stations Group

51.9% Complete

Contract Completion: March '18; Anticipated to be May '19
Honouliuli (Ho'opili) Station – 56.8% Complete



- Elevator installation continues.
- Conduit installation continues for ground level area.
- Interior work underway for ancillary rooms.
- Turnover of platform level to CSC is pending PSG stud weld certification.



Farrington Highway Stations Group

68% Complete

Contract Completion: January '18; Anticipated to be February '19

Hō'ae'ae (West Loch) Station – 75% Complete



- Continuing site irrigation and landscaping.
- Completed installation of overhead phenolic electrical conduit.
- Continuing installation of platform PSG base plates.
- Completed backfill and compaction of Mauka station entrance parking area.

Farrington Highway Stations Group

68% Complete

Contract Completion: January '18; Anticipated to be February '19
Pouhala (Waipahu Transit Center) Station – 63% Complete



- Completed installation of Makai station precast stairs.
- Completed installation and curing of ancillary roof topping slab.
- Formed and poured vertical raceway column pedestal.
- Completed Mauka pedestrian bridge walkway concrete topping slabs.

Farrington Highway Stations Group

68% Complete

Contract Completion: January '18; Anticipated to be February '19
Hālaulani (Leeward Community College) Station – 61% Complete



- Complete corrugated metal panel installation at station entrance lantern structure.
- Completed installation of elevator louvers.
- Started installation of junction boxes for PSG's at platform.
- Completed ancillary building exterior colored concrete finish.

University of Hawai'i Park and Ride – Road "B"

16.1% Complete

Contract Completion: July '19



- Stockpile relocation completed.
- Mass grading for the park and ride area completed.
- D.R. Horton utility work for Road B completed.
- Continuing mass grading of Road B area.
- Continuing work on drain line.

Core Systems



Testing

- First phase of functional testing of the interfaces between the vehicle & wayside equipment is expected to begin in 3rd Q 2018.

Testing in Progress:

- Honouliuli TPSS
- Fiber Optic Cable Network (FOCN) in the MSF
- Hō'ae'ae ATC Wayside Equipment.



MSF Yard

- MSF Yard Systems installation is expected to be completed in June 2018.
- Yard third rail energized in May 2018.
- MSF clearance testing on June 18, 2018.

MSF Buildings

- MSF Building Systems installation is expected to be completed in June 2018.

Manufacturing

- All Signal, TES, and SCADA systems are onsite or ready for delivery for Segment 1.
- Honouliuli TPSS was delivered and installed on May 27, 2018.
- Hālaulani TPSS is scheduled to be delivered to site on June 30, 2018.

Airport Guideway and Stations

22.7% Complete

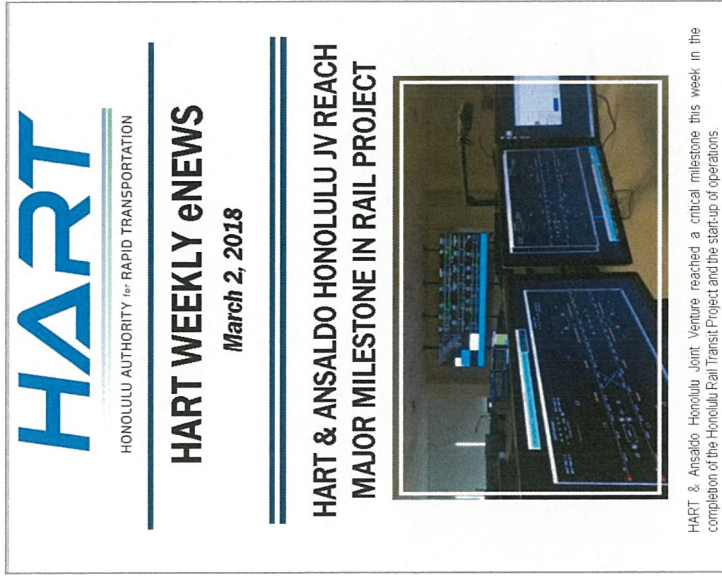
Contract Completion: May 2021



- Completed to date: 63 drilled shaft foundations, 23 piers, and 277 pre-cast segments.
- Daytime traffic maintenance along Kamehameha Hwy between Halawa Drive and Radford Drive with one (1) lane closure in each direction. Detours will be utilized between 6/16/18 and 7/15/18. Work progressing: Drilled shaft and pier installations.
- Night time traffic maintenance include detours along Nimitz Highway in both East and West directions. Work progressing: Utility relocation and roadway widening work.

Stay Connected

- Weekly Traffic Advisories
- Weekly e-Blast
- Website and Social Media



HART
HONOLULU AUTHORITY for RAPID TRANSPORTATION

HART WEEKLY eNEWS
March 2, 2018

HART & ANSALDO HONOLULU JV REACH MAJOR MILESTONE IN RAIL PROJECT

HART & Ansaldo Honolulu Joint Venture reached a critical milestone this week in the completion of the Honolulu Rail Transit Project and the start-up of operations.



HART Rapid Response:

- 24-Hour Project Hotline number 808-566-2299
- Email Inquiries: info@HonoluluTransit.org
- Social Media Inquiries



Mahalo!