

# Honolulu Rail Transit Project Update

## January 14, 2016

### Aloha Stadium Board of Directors





# Project Map

## 20 Miles – 21 Stations





# Kam Hwy Stations Group (KHG)

- December 22, 2015: Contract Awarded
- Contractor: Nan Inc.
- Contract Amount: \$115,805,845
- Contract Period: NTP + 32 months
- Status: Initial contract submittals



# Aloha Stadium Station Site Map







## Aloha Stadium Station — View from Stadium Parking

H O N O L U L U R A I L T R A N S I T P R O J E C T  
[www.honolulutransit.org](http://www.honolulutransit.org)

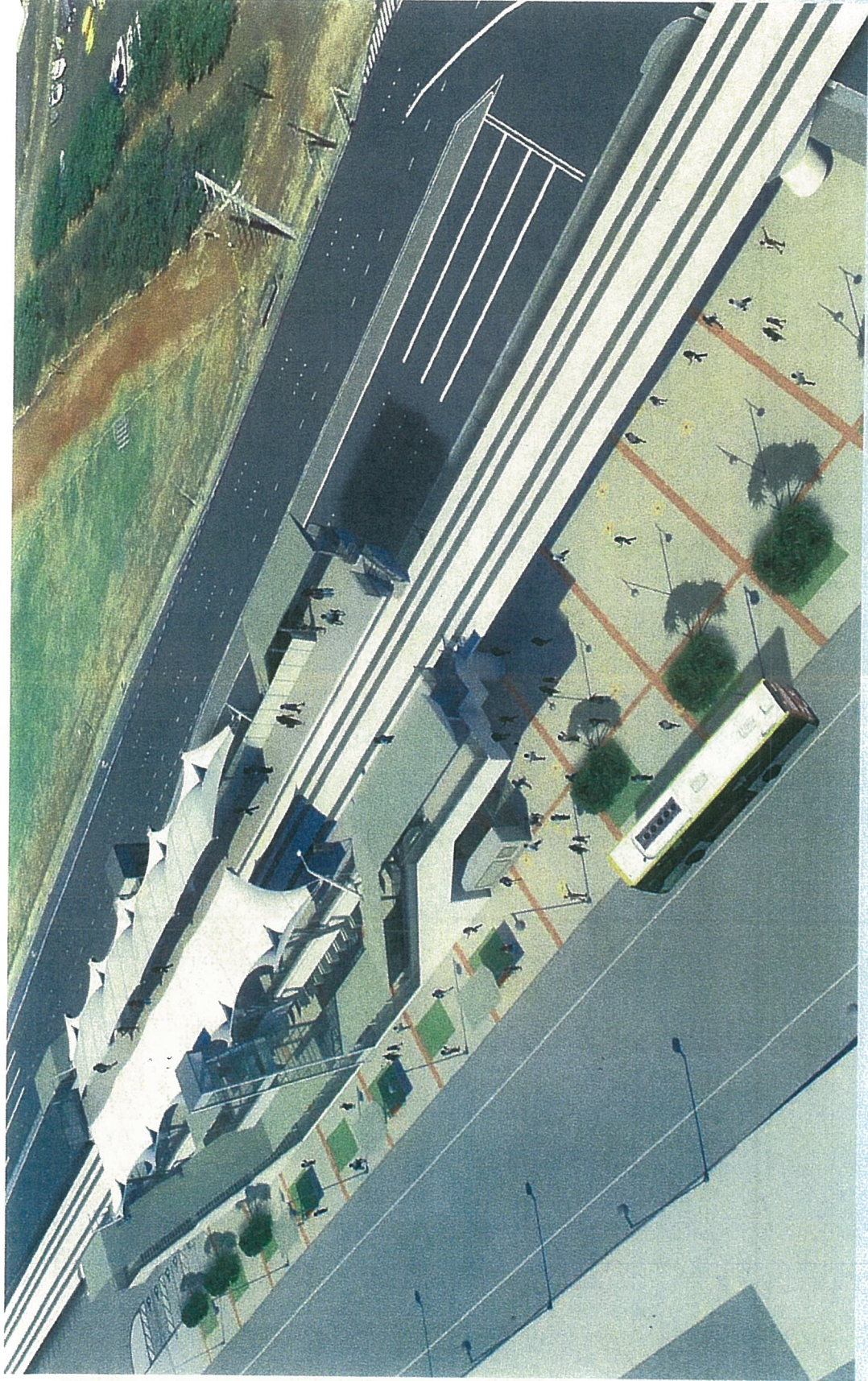
**HART**  
HONOLULU AUTHORITY FOR RAPID TRANSPORTATION





**Aloha Stadium Station – View from Kamehameha Highway**





## Aloha Stadium Station – Aerial View





## Aloha Stadium Station – Night View from Stadium Parking

H O N O L U L U R A I L T R A N S I T P R O J E C T  
[WWW.HONOLULUTRANSIT.ORG](http://WWW.HONOLULUTRANSIT.ORG)

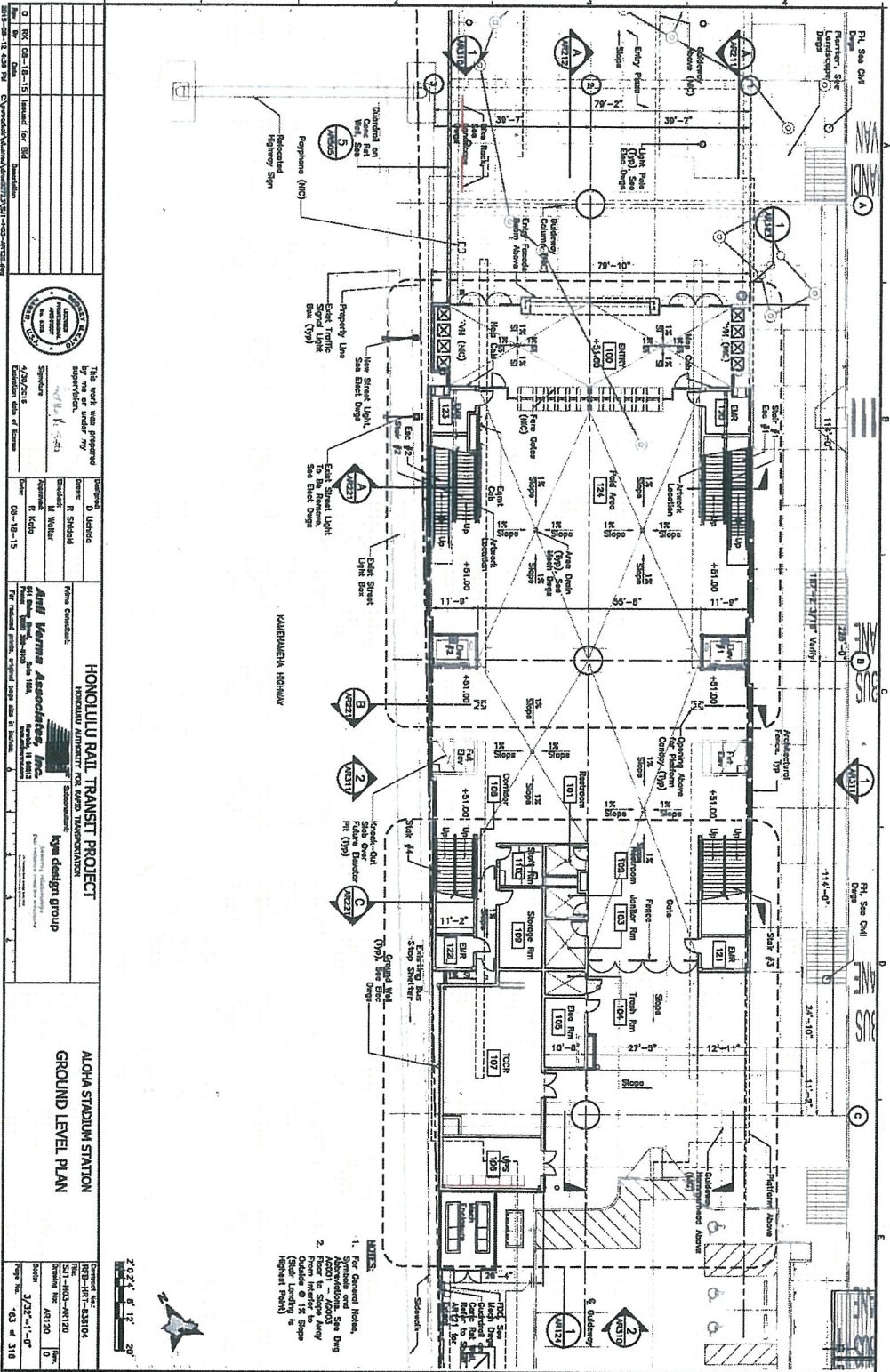
**HART**  
HONOLULU AUTHORITY FOR RAPID TRANSPORTATION







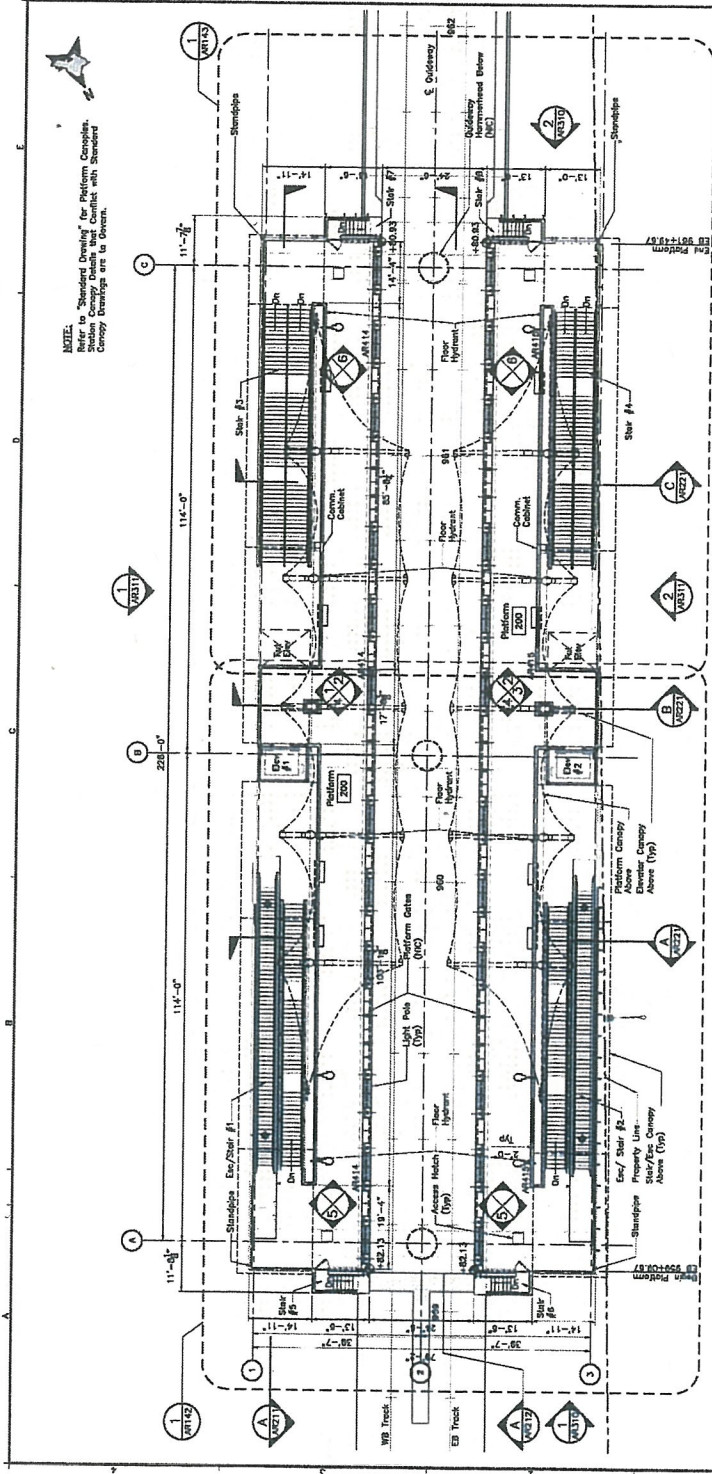
# Aloha Stadium Station Ground Level



This work was prepared by me or under my supervision. Signature: <i>[Signature]</i> Date: 4/20/2015 Title: <i>[Title]</i>		Prepared: D. Ueda Checked: R. Shihai Drawn: W. H. H. H. Date: 04-18-15	
<b>HONOLULU RAIL TRANSIT PROJECT</b> HONOLULU STATION HONOLULU STATION HONOLULU STATION		<b>ALOHA STADIUM STATION</b> GROUND LEVEL PLAN	
Contract No.: HRT-11-001 Revision: 0 Date: 3/22-1-10 Page No.: 43 of 316		Contract No.: HRT-11-001 Revision: 0 Date: 3/22-1-10 Page No.: 43 of 316	



# Aloha Stadium Platform Level



**NOTE:**  
 Refer to "Standard Details" for Platform Canopies.  
 Station Canopy Details that Conflict with Standard  
 Canopy Drawings are to Govern.

**2024 01 12 20'**

Contract No.:	100-103-0310
Project No.:	100-103-0310
Sheet No.:	100-103-0310
Scale:	3/32" = 1'-0"
Page No.:	100 of 318

**HONOLULU RAIL TRANSIT PROJECT**  
 HONOLULU AUTHORITY FOR RAPID TRANSPORTATION

**ALPHA STADIUM STATION**  
**PLATFORM LEVEL PLAN**

From Consultant:  
**Neil Varma Associates, Inc.**  
 400 King Street, Suite 1000  
 Honolulu, HI 96813  
 neil@nva.com

Site: 08-18-15

This work was prepared by the undersigned for the purpose of the project shown on the drawings. It is not to be used for any other purpose without the written consent of the undersigned.

Scale: 3/32" = 1'-0"

Drawn by: [Name]  
 Checked by: [Name]  
 Date: 08-18-15

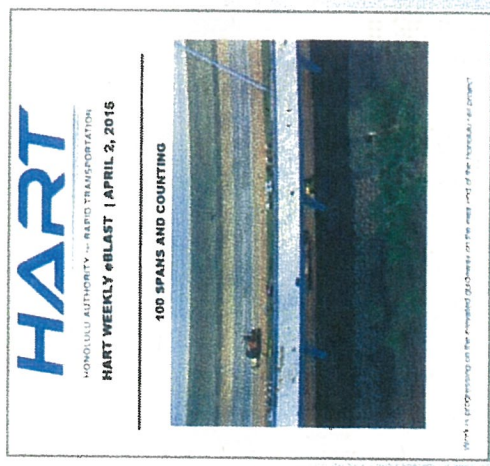






# Stay Connected

- Monthly HART Facts Ad
- Public Access Television Program
- Weekly e-Blast
- Weekly Traffic Advisories
- Website and Social Media



PROJECT REVENUE STATUS As of March 1, 2015		PROJECT COST STATUS As of March 1, 2015	
Actual	Projected	Actual	Projected
Operating Revenue	\$1,100	Operating Revenue	\$1,100
Capital Revenue	\$1,100	Capital Revenue	\$1,100
Other Revenue	\$1,100	Other Revenue	\$1,100
<b>TOTAL</b>	<b>\$3,300</b>	<b>TOTAL</b>	<b>\$3,300</b>

**QUESTIONS:** How can the public track HART's finances? Dan Grabauskas, HART's Chief Financial Officer, will present at the HART Board meeting on April 2, 2015. HART presents its financial information to the Board of Directors at its monthly meetings, which are open to the public. You can also track the project's progress and its finances by reading HART's Monthly Reports, which are posted on the project website at [www.honolulutransit.org](http://www.honolulutransit.org). The project and its finances are also reviewed monthly by the Federal Transit Administration (FTA). For more information, visit the project website [www.honolulutransit.org](http://www.honolulutransit.org).



**HART Rapid Response:**

- 24-Hour Project Hotline number 808-566-2299
- Email Inquiries: [info@HonoluluTransit.org](mailto:info@HonoluluTransit.org)
- Website Inquiries



# Mahalo!



HONOLULU RAIL TRANSIT

HONOLULU RAIL TRANSIT PROJECT  
WWW.HONOLULUTRANSIT.ORG

**HART**  
HONOLULU AUTHORITY FOR RAPID TRANSPORTATION